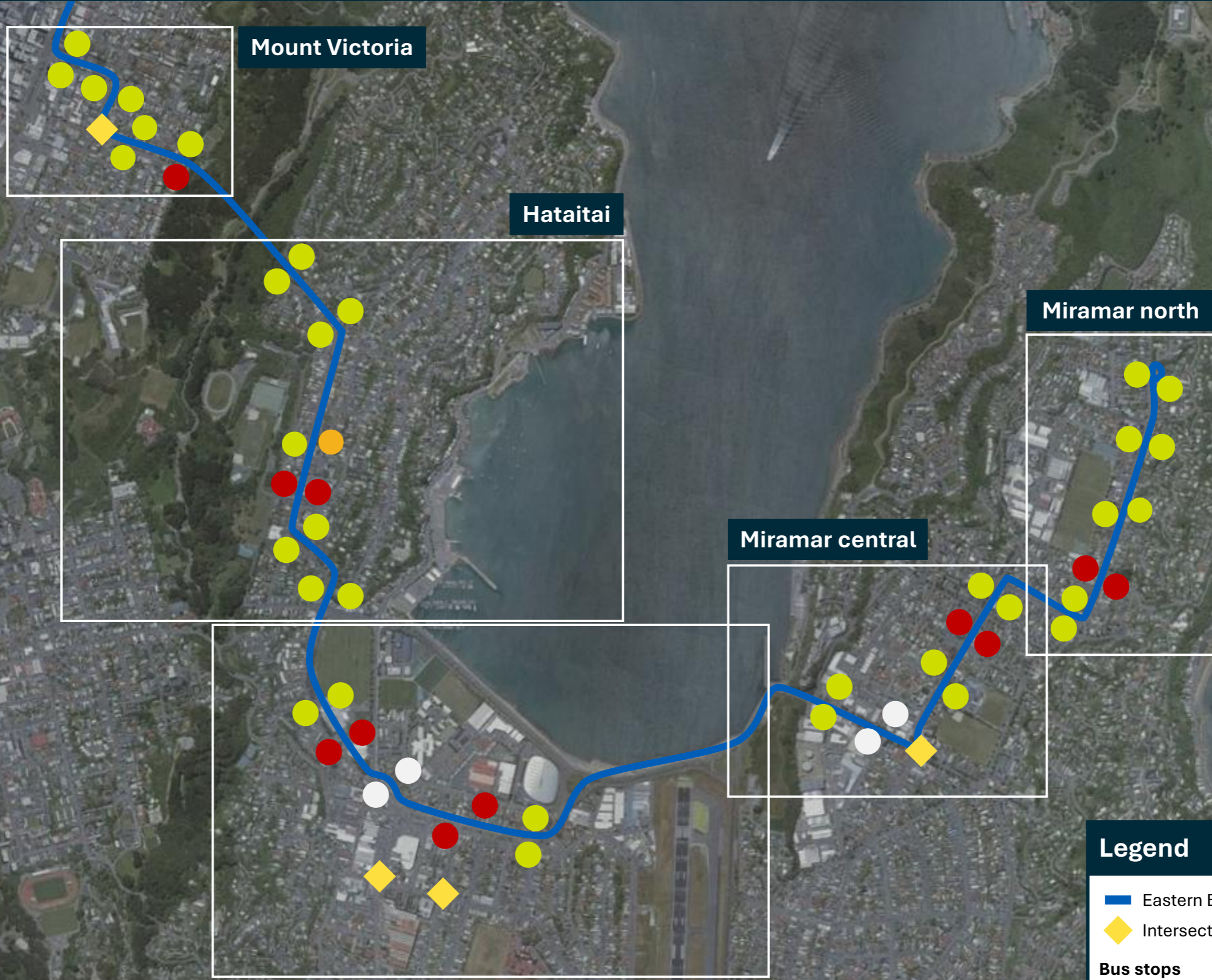


Eastern Bus Corridor Improvements: Central City to Miramar

May 2026

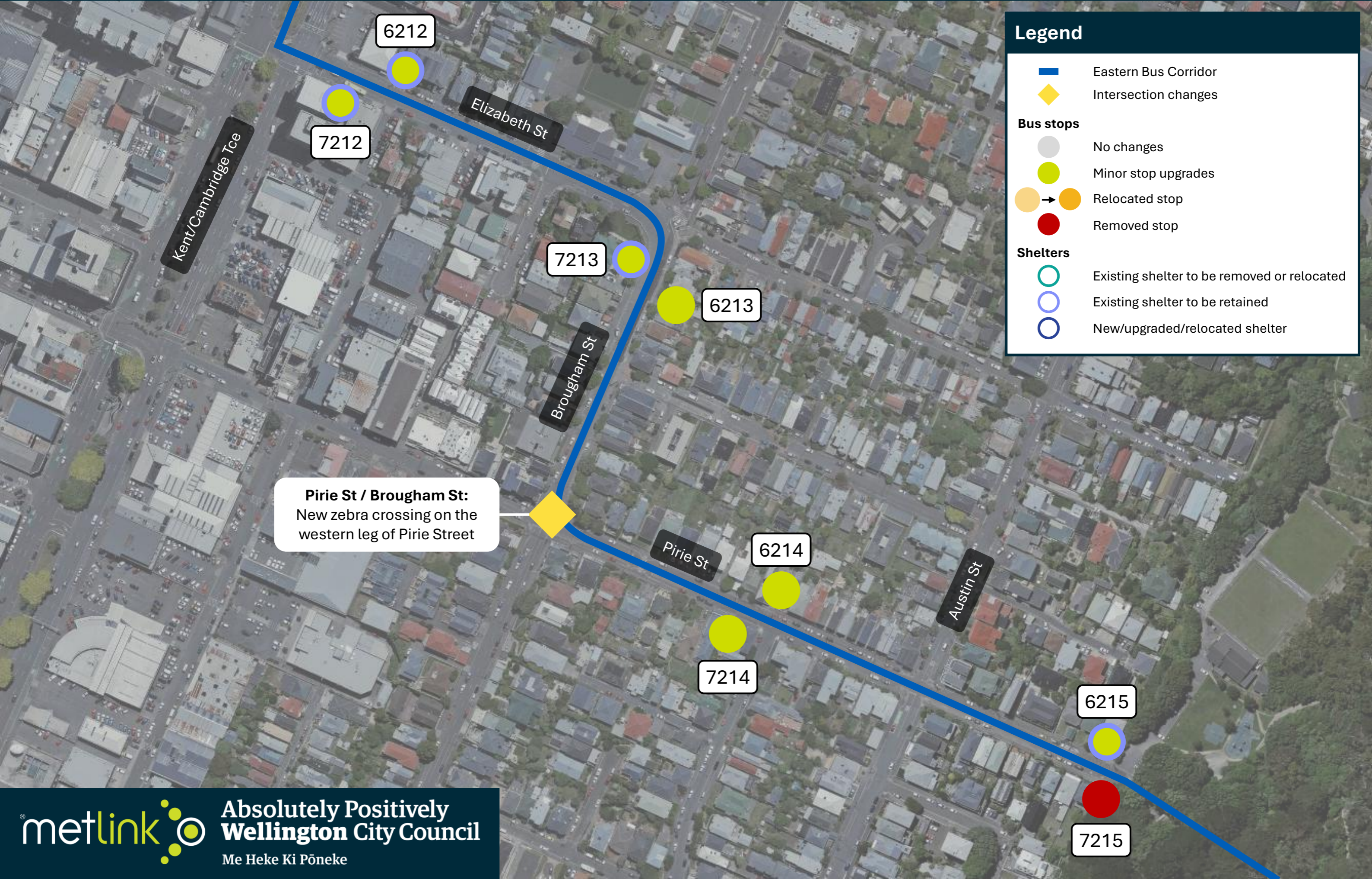


Legend

- Eastern Bus Corridor
- Intersection changes
- Bus stops**
 - No changes
 - Minor stop upgrades
 - Relocated stop
 - Removed stop (and shelter, where applicable)

Eastern Bus Corridor Improvements: Mount Victoria

May 2026



Legend

- Eastern Bus Corridor
- Intersection changes
- Bus stops**
 - No changes
 - Minor stop upgrades
 - Relocated stop
 - Removed stop
- Shelters**
 - Existing shelter to be removed or relocated
 - Existing shelter to be retained
 - New/upgraded/relocated shelter

Eastern Bus Corridor Improvements: Hataitai

May 2026



Legend

- Eastern Bus Corridor
- Intersection changes
- Bus stops**
 - No changes
 - Minor stop upgrades
 - Relocated stop
 - Removed stop
- Shelters**
 - Existing shelter to be removed or relocated
 - Existing shelter to be retained
 - New/upgraded/relocated shelter

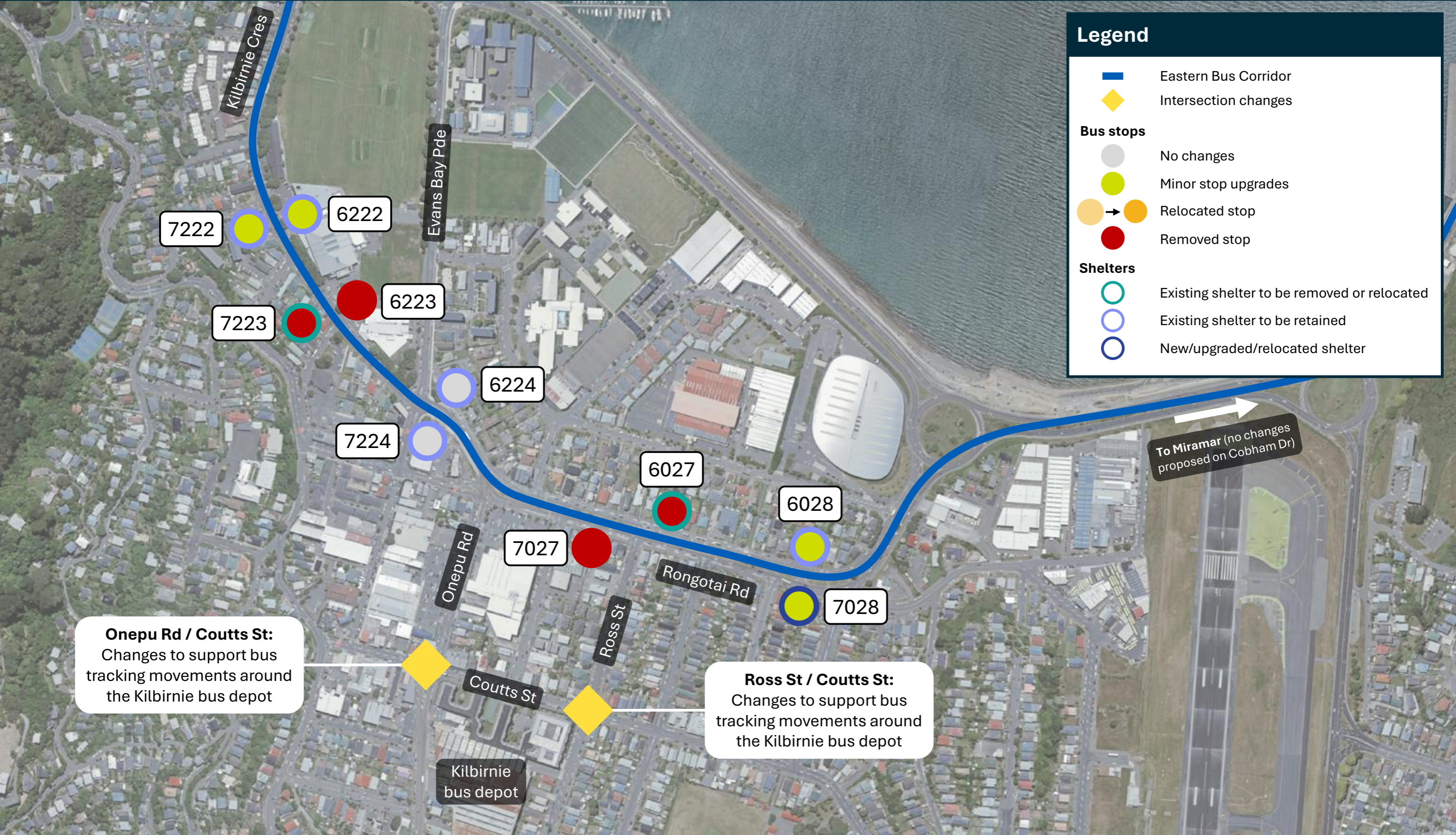
Eastern Bus Corridor Improvements: Kilbirnie

May 2026



Legend

- Eastern Bus Corridor
- ◆ Intersection changes
- Bus stops**
- No changes
- Minor stop upgrades
- → ● Relocated stop
- Removed stop
- Shelters**
- Existing shelter to be removed or relocated
- Existing shelter to be retained
- New/upgraded/relocated shelter



Onepu Rd / Coutts St:
Changes to support bus tracking movements around the Kilbirnie bus depot

Ross St / Coutts St:
Changes to support bus tracking movements around the Kilbirnie bus depot

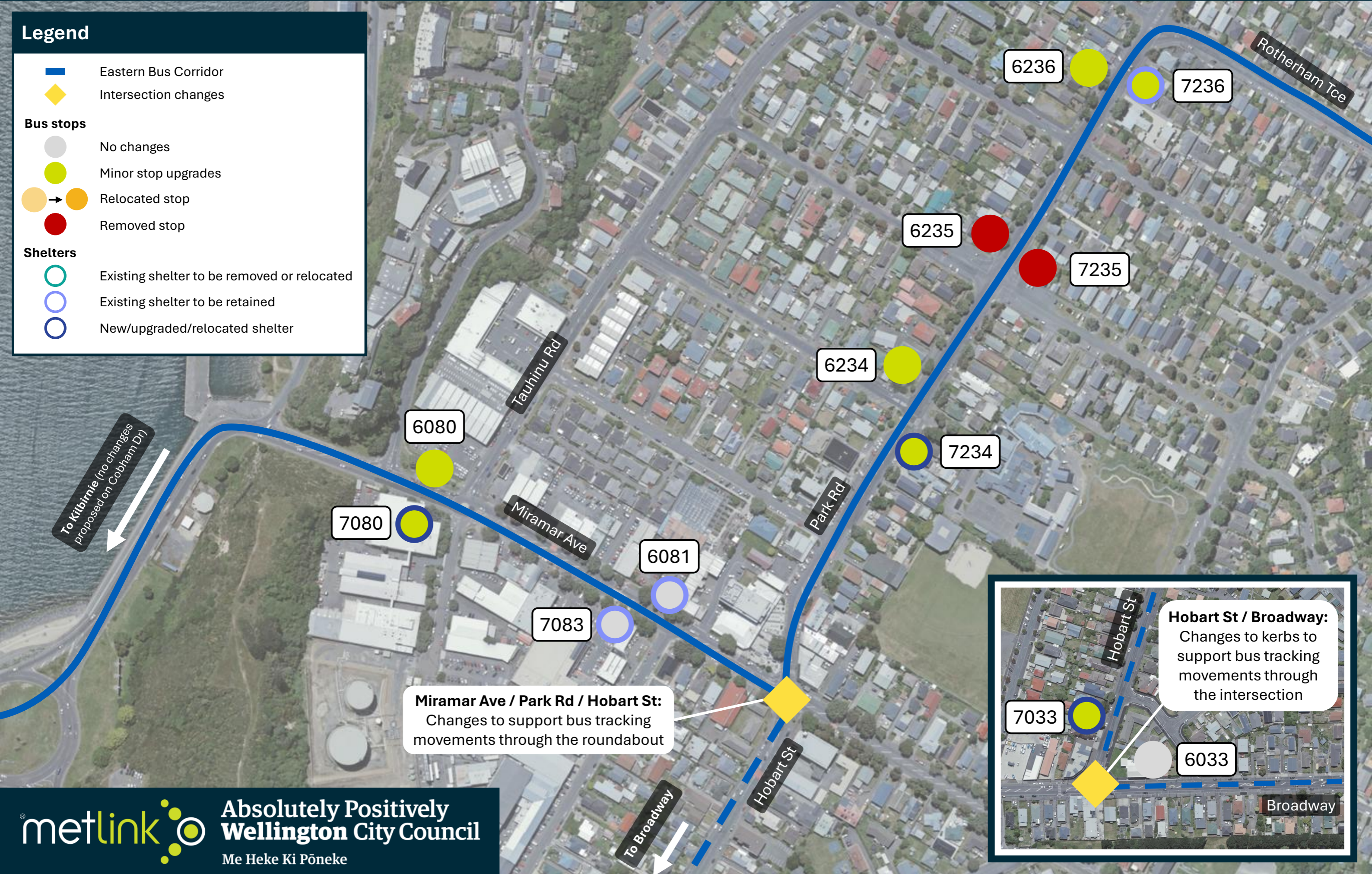
Eastern Bus Corridor Improvements: Miramar central

May 2026



Legend

- Eastern Bus Corridor
- Intersection changes
- Bus stops**
 - No changes
 - Minor stop upgrades
 - Relocated stop
 - Removed stop
- Shelters**
 - Existing shelter to be removed or relocated
 - Existing shelter to be retained
 - New/upgraded/relocated shelter



Hobart St / Broadway:
Changes to kerbs to support bus tracking movements through the intersection

Eastern Bus Corridor Improvements: Miramar north

May 2026



Legend

- Eastern Bus Corridor
- Intersection changes
- Bus stops**
 - No changes
 - Minor stop upgrades
 - Relocated stop
 - Removed stop
- Shelters**
 - Existing shelter to be removed or relocated
 - Existing shelter to be retained
 - New/upgraded/relocated shelter