

# We are proposing a change in your area

Kia ora,

## Proposal:

<b>Reference</b>	<p>TR63-23 Thorndon Connections transitional Bike, Bus, and Pedestrian Improvements. Proposed cycle lanes, parking changes, traffic calming and bus stop changes.</p>
<b>Location – where we propose to make the change</b>	<p>Tinakori Road, Hill Street, Molesworth Street, Murphy Street, Mulgrave Street, Bunny Street, Aitken Street, Stout Street, Pipitea Street, Lambton Quay – Thorndon.</p>
<b>Why we are proposing the change</b>	<ul style="list-style-type: none"> <li>• We are preparing our city for the future by rebalancing how we use our existing street space to create more opportunities to encourage mode shift.</li> <li>• This route is part of the Wellington Bike Network, which was approved by the Council in March 2022.</li> <li>• This route will support the strategic goals outlined in the Long-Term Plan, the Regional Land Transport Plan and Te Atakura by improving safety, improving travel options, supporting growth and enabling a reduction in transport-generated carbon emissions.</li> <li>• This section of the bike network connects the Golden Mile, Thorndon Quay and the central city to the suburbs of Thorndon and Wadestown.</li> <li>• The proposed changes will make it safer and more attractive for people to walk locally and bike/scoot between these suburbs and Wellington City.</li> <li>• New pedestrian crossings, raised crossings, traffic calming measures and safer speeds will make Thorndon a more attractive place to walk locally, particularly for children, seniors and people with disabilities.</li> <li>• There are approximately 2500 school students travelling in, out and around Thorndon and this proposal will make it safer for our rangatahi to get to school using active modes of transport.</li> </ul>
<b>What we'd like to do</b>	<ul style="list-style-type: none"> <li>• Implement the Thorndon Connections Bike, Bus and Pedestrian improvements.</li> </ul> <p>Tinakori Road</p> <ul style="list-style-type: none"> <li>• Remove two P60/P120 parking spaces outside no.277 Tinakori Road to convert this space into a community parklet.</li> <li>• Install a new mobility park outside no.320 Tinakori Road removing one P60/P120 parking space.</li> <li>• Remove one P120 parking space opposite no. 241 Tinakori Road replacing with 6 meters of broken yellow lines (No Stopping).</li> </ul> <p>Hill Street</p> <ul style="list-style-type: none"> <li>• Remove one residents parking space outside no.99 Hill Street replacing with 5 metres of broken yellow lines (No Stopping).</li> </ul>

- Alter the existing Bus Stop from 8am-4pm Monday – Friday to six P5 Pick up and drop space 8am-9am and 2pm-3pm Monday – Friday during school terms only, Bus Stop at other times.

## Aitken Street

- Install 156 metres of separated cycleway along the southern side of Aitken Street.
- Change the existing angled parking spaces to parallel parking spaces on the southern side of Aitken Street and replace six P10s and 28 P\$ metered parking spaces with four P10s, 10 P\$ metered parking.
- Relocate the existing tour bus stop on the north side of Aitken Street outside the National Library 12 meters east, replacing two P\$ metered parking spaces.
- Install a new mobility parking space on the north side of Aitken Street near its intersection with Molesworth Street directly outside the National Library.
- Reduce the existing motorbike parking on the north side of Aitken Street from 18 metres to 12 metres creating one additional P\$ metered parking space.
- Resolute a 10-metre section of shared path at the southern corner of the Aitken/Molesworth Street intersection to allow cyclists to bypass the intersection onto Molesworth Street.

## Pipitea Street

- Remove one P\$ metered parking spaces on the south side of Pipitea Street near the intersection with Molesworth Street replacing with 6 metres of broken yellow lines (No Stopping).
- Alter one P\$ metered parking space to a P\$ mobility parking space on the south side of Pipitea Street outside NZ Rugby Union Building.
- Remove one P\$ metered parking space on the north side of Pipitea Street near the intersection with Molesworth Street replacing with 5 metres of broken yellow lines (No Stopping).
- Install two new Diplomatic Corp parks outside the High Commission of India at no.72 Pipitea Street replacing two existing P\$ metered parking spaces.
- Install one Diplomatic Corp Park outside no.39 Pipitea Street replacing one existing metered parking space.

## May Street

- Replace the existing Give way with a Stop control at the intersection of May Street at Murphy Street.

## Kate Sheppard Place

- Install a one way only directional restriction allowing travel east only from Molesworth Street to Mulgrave Street.
- Remove the existing give way control at the intersection of Kate Sheppard Place to Molesworth Street.

## Molesworth Street

- Install a separated bi-directional cycleway for 182 meters on the eastern side between the intersections of Lambton Quay and Aitken Street replacing one general traffic lane and removing 19 P\$ metered parking spaces.
- Install a separated uni-directional cycleway for 443 meters on the eastern side of Molesworth Street heading north from the intersection of Aitken Street to no.186 Molesworth Street removing 47 P\$ metered parking spaces, one mobility park and 11 metres of motorbike parking.
- Install a separated uni-directional cycleway for 55 meters on the western side of Molesworth Street from no.186 Molesworth Street to the State Highway 1 overbridge.
- Remove bus stop #5112 Molesworth Street at Wellington Cathedral of St Paul.
- Remove bus stop #5114 Molesworth Street at SH1 Motorway overbridge
- Remove one metered parking space outside no.127 Molesworth Street to extend the motorbike parking to 10 metres.
- Replace two metered parking spaces outside no.83 Molesworth Street with car share spaces.
- Install one new metered P120 mobility park outside Parliament on the west side of the road opposite no.42 Molesworth Street removing two angled P\$ metered parking spaces.
- Install two new taxi stand spaces outside no.127 Molesworth Street removing two metered parking spaces.
- Install a new cycle crossing next to the existing pedestrian crossing outside no.186 Molesworth Street.

## Lambton Quay

- Install a separated bi-directional cycleway for 71 meters on the southern side of Lambton Quay between the intersections of Whitmore Street and Bunny Street. This removes a bus stop from 7:00am-9:00am and 12 P\$ metered parking spaces at other times. This bus stop will be relocated to Stout Street.

## Bunny Street

- Remove the existing bus stop on the north-eastern side of Bunny Street replacing it with 15.5metres of broken yellow lines (No stopping).

- Alter the existing full-time loading zone on the southwestern side of Bunny Street to Bus Stop 7:00am-9:00am and 3.30pm-6:00pm Monday – Friday and loading zone at all other times.
- Resolute an 8-metre section of shared path at the southern corner of the Bunny Street/Thorndon Quay intersection to allow cyclists to bypass the intersection from Bunny Street into Thorndon Quay.

## Murphy Street

- Install a separated uni- directional cycleway for 95 meters on the eastern side of Murphy Street heading south from the intersection of Tinakori road to the pedestrian crossing at the end of the State Highway 1 overbridge.
- Install a separated uni- directional cycleway for 271 meters on the western side of Murphy Street heading south from opposite no.68 Murphy Street to the intersection of Pipitea Street.
- Remove 10 P\$ metered parking spaces on the eastern side of Murphy Street between Halswell Street and Turnbull Street replacing with 57 metres of broken yellow lines (No Stopping).
- Remove three P\$ metered parking spaces on the eastern side of Murphy Street between Turnbull Street and the signalised crossing replacing with 16 metres of broken yellow lines (No Stopping).
- Install a give way control on Halswell Street at the intersection of Murphy Street.
- Install four new P10 pick up and drop parking spaces 8:30am-9:30am and 2:30pm-3:30pm Monday – Friday during the period when the Thorndon Pool is closed only.

## Mulgrave Street

- Install a separated uni- directional cycleway for 153 meters on the western side of Mulgrave Street heading south from the intersection of Pipitea Street to the intersection of Aitken Street. Removing seven P\$ metered parking spaces.
- Remove five P\$ metered parking spaces installing 36 meters of broken yellow lines (No Stopping) outside no.32 Mulgrave Street.
- Remove one metered parking space installing 6 meters of broken yellow lines (No Stopping) outside no.48 Mulgrave Street.

## Stout Street

- Change 22 angled parking spaces to parallel Bus Stop 7:00am-9:00am and 3.30pm-6:00pm Monday – Friday and then 12 P\$ metered parking spaces at other times.

## Impact

- Overall pedestrian impact is positive with improved safety and accessibility from the upgrade of five pedestrian zebra crossings and one new raised pedestrian platform being installed and safer speed limits.

- There is an isolated negative impact on pedestrians from these changes at the intersections of Molesworth/Aitken and Bunny/Thorndon Quay sites, where small sections of shared paths are proposed to minimise conflict between people on bikes and motor vehicles.
- Business impact will be minimal. All carparks in the Tinakori Village shopping area will be retained, except for changing two carparks to a community parklet which is expected to attract more people to the area. Workplaces on Molesworth and Mulgrave will be largely unaffected as on street parking does not currently provide for commuters in the area. No loading zones will be altered. There will be capacity for those who need to drive to cafes and other business to continue to do so on the left side of Molesworth Street, Hill Street, Pipitea Street and private parking lots in the area. New World, the Cathedral and hotels in the area all have their own off-street parking facilities.
- The impact on public transport users will be improved efficiency from the rationalisation of bus stops to improve the spacing along Molesworth Street and an improved walking journey to the area from the railway station. There is an isolated negative impact on bus passengers boarding or alighting at Bus Stop #4114 Murphy Street at SH1 Motorway overbridge where the cycle lane occupies part of the bus platform to minimise conflict between people on bikes and motor vehicles. Raised pedestrian crossings on Molesworth Street, Murphy Street and Hill Street may impact bus passenger comfort on this section of the route.
- The impact on people cycling or wanting to cycle will be safer and more attractive routes through Thorndon and greater connectivity to the existing and planned bike network.
- The impact on people choosing to reduce car ownership will be improved as two car share parking spaces will be installed.
- Positive impact for people with disabilities with three additional mobility parking spaces, bike lanes to reduce the number of people biking or scooting on the footpath, safer vehicles speeds and more bike parking reducing clutter on the footpaths.
- Net parking impact
  - Removal of 146 P\$ metered parking spaces
  - Removal of one residents parking space
  - Removal of three P60/ P120 time restricted
  - Removal of two P10s
  - Reduction of motorbike parking by 11 meters
  - Addition of two car share spaces
  - Addition of three Mobility Parks
  - Addition of three diplomatic parks
  - Addition of five P5 Pick up and Drop off parking spaces
  - Addition of four P10 Pick up and Drop off parking spaces
  - Addition of two Taxi stand spaces
- These changes will have a negative impact on short stay visitors currently driving to destinations in the area where no off-street parking

# We are proposing a change in your area

	<p>is available. However, they will be positive for mobility park users, parents picking up and dropping off students and those wanting to change how they travel to the area.</p> <ul style="list-style-type: none"> <li>• The impact on people driving will be improved safety. Safer speeds and restriction of turning movement on Pipitea Street and Kate Shepard Place may result in slightly longer vehicle travel times for a small number of trips. New raised platforms will reduce operating speeds at specific locations and may cause an inconvenience for general traffic, freight and buses.</li> </ul>
<p><b>How this relates to the parking policy</b></p>	<ul style="list-style-type: none"> <li>• Supports a shift in type of transport used – facilitates a shift to using active (e.g., walking and cycling) and public transport through re-allocating street space and parking management, to move more people with fewer vehicles.</li> <li>• Support safe movement – facilitate the safe and efficient movement of people and goods by focusing on people moving along transport corridors rather than people parking or storing stationary vehicles.</li> <li>• A parking management plan was undertaken to inform the design of these changes and feedback from the community has subsequently been incorporated into the proposed parking changes.</li> <li>• As outlined in the Parking Policy 2020, mobility parks and short-term parking has been prioritised over commuter parking which is the lowest priority for road space allocation.</li> </ul>
<p><b>Additional Information</b></p>	<ul style="list-style-type: none"> <li>• This project is a key initiative to deliver on several strategic plans for the city, including the Long-Term Plan, Te Atakura (Climate Action Plan) and Paneke Pōneke (Wellington Bike Network Plan).</li> <li>• The transitional bike and bus improvements will be made using lower cost, adaptable materials that can be adjusted based on public feedback, and information collated, once these initial installations are in place.</li> <li>• Designs were developed by technical experts and with input from the community. A technical working group helped to ensure the project objectives were met without compromising road safety, within a constrained road corridor.</li> <li>• In addition to the legal descriptions below, this proposal also includes pedestrian improvements that make it easier to cross streets throughout Thorndon by raising multiple existing pedestrian crossings and installing traffic calming measures on Hill Street. More information on these improvements can be found at <a href="#">Thorndon connections   Projects - WCC Transport Projects</a> . It is proposed that these changes will be complemented by an extension of the existing 30kph zone on Tinakori Road to the entrance of the Botanic Garden to just east of the intersection with Hill Street, down Hill Street including the adjacent side streets (Parliament Street, Selwyn Terrace, Guildford Terrace and Eccleston Hill).</li> <li>• These speed changes are being consulted on alongside this Traffic Resolution process but will follow the alternative method for setting speed limits outlined in the Setting the Speed Limit Rule 2022. Submissions received on the speed limit change will be considered by</li> </ul>

# We are proposing a change in your area

Absolutely Positively  
Wellington City Council

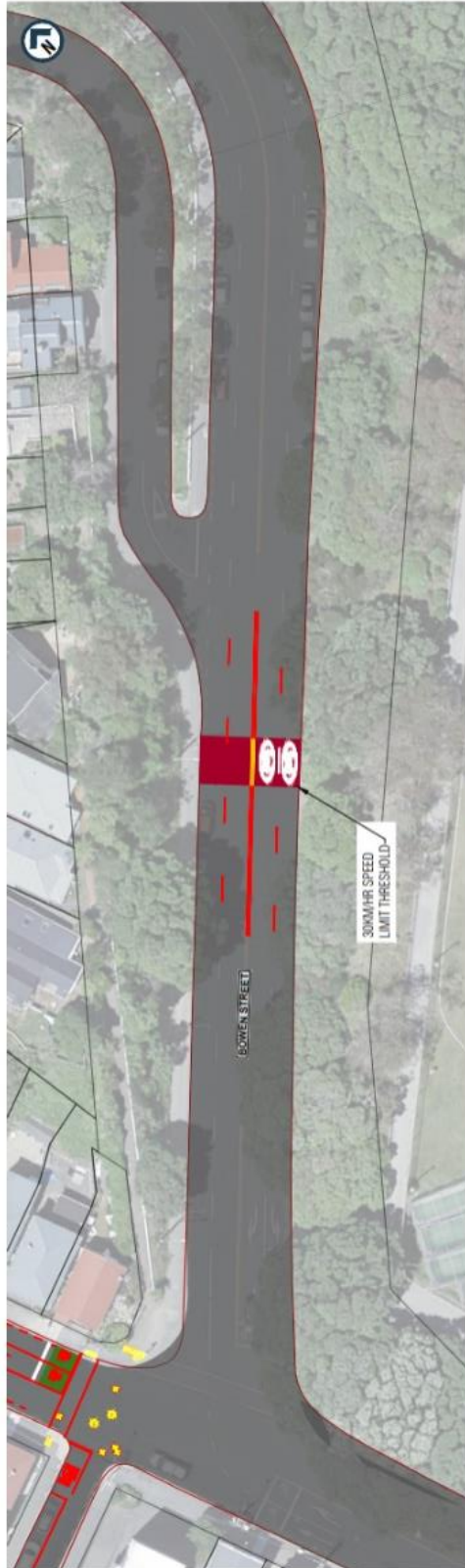
Me Heke Ki Pōneke

	<p>the Council, before a final decision by the Director of Land Transport, Waka Kotahi is made on the proposed speed limit change.</p> <ul style="list-style-type: none"><li>• Average monthly bus passenger number – 132,143 passengers.</li><li>• Average daily vehicle traffic count – Tinakori Road 12,841, Hill Street 2,677, Aitken Street 2,585, Pipitea Street 2,891, Molesworth Street 9,079, Murphy 8,582, Bunny Street 479, Lambton Quay 8,761.</li><li>• Annual parking revenue impact – Annual loss of \$673,052.</li><li>• To view the legal description for this Traffic Resolution, an electronic copy of the report will be available on the Council’s website from 9.00am Monday 20 February 2023 at <a href="https://www.letstalk.wellington.govt.nz/">https://www.letstalk.wellington.govt.nz/</a> or you can call (04) 499 4444 and we will send one out to you.</li></ul>
<b>Feedback</b>	<ul style="list-style-type: none"><li>• If you would like to provide us with specific feedback, which will be added to the Traffic Resolution following consultation and made public in full, you can do so by filling out an online submission form, downloading a printable submission form on <a href="https://www.letstalk.wellington.govt.nz/">https://www.letstalk.wellington.govt.nz/</a> or emailing us at <a href="mailto:thorndonconnections@wcc.govt.nz">thorndonconnections@wcc.govt.nz</a> . <b>Please note if you are giving feedback the consultation period opens at 9.00 am Monday 6 March 2023 and finishes at 5.00 pm Monday 27 March 2023.</b></li><li>• What we do with your personal information:</li><li>• All submissions (<b>including your name</b>, but not contact details) are provided <b>in their entirety</b> to elected members and made available to the public on our website and at our office. Personal information (including contact details) will also be used for the administration of the consultation process including informing you of the outcome of the consultation. All information collected will be held by Wellington City Council, 113 The Terrace, Wellington, with submitters having the right to access and correct personal information.</li></ul>
<b>Next Steps</b>	<ol style="list-style-type: none"><li>1. Feedback will be collated, and the proposal will be presented to the Koata Hātepe   Regulatory Processes Committee on 11 May 2023.</li><li>2. If approved, the proposal will be installed from August 2023.</li></ol>

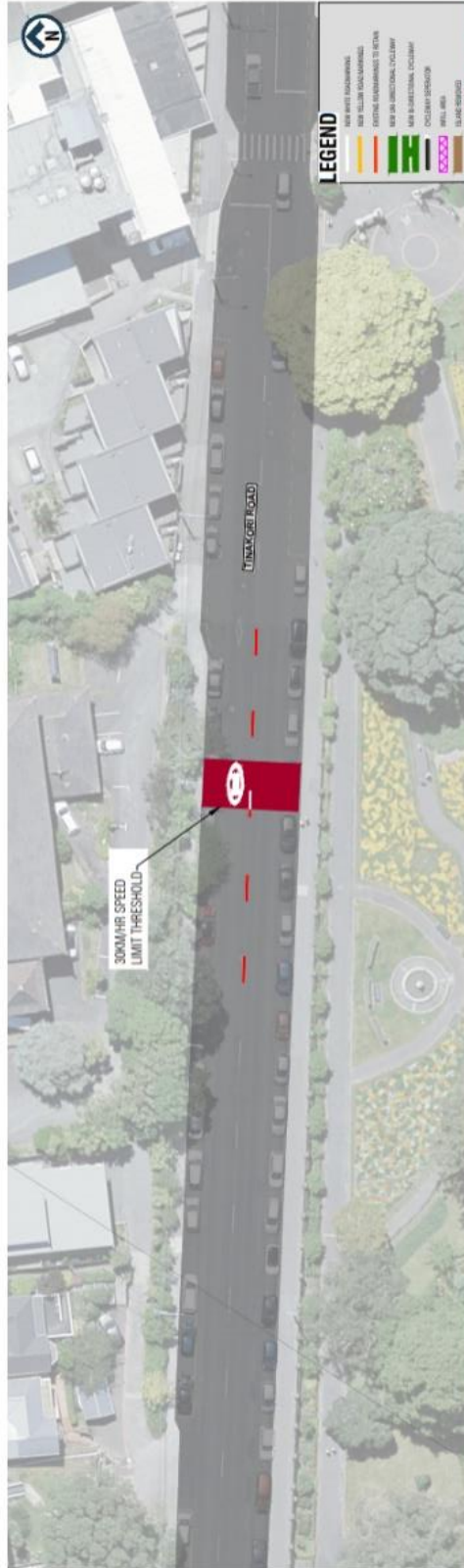
# We are proposing a change in your area

Absolutely Positively  
Wellington City Council  
Me Heke Ki Pōneke

## Traffic Resolution Plan: TR63-23 Thorndon Connections – Bike, bus, and pedestrian improvements



BOWEN STREET



TINAKORI ROAD - PART 1

**LEGEND**

- NEW BIKE FACILITIES
- NEW BIKE FACILITIES
- EXISTING FACILITIES TO BE REMOVED
- NEW OR IMPROVED CYCLEWAY
- NEW BIKEWAY (ON-CARRIAGE CYCLEWAY)
- CYCLEWAY SIGNAGE
- NEW AREA
- PLANE SIGNAGE

**WORK IN PROGRESS**  
PRINTED 13/02/2023 5:33:32 pm

DATE	DATE
APPROVED	DATE
BY	BY
FOR CONSULTATION	

PROJECT: WELLINGTON CITY COUNCIL  
THORNDON TRANSITIONAL CYCLEWAY  
TYPE: GENERAL LAYOUT

WSP Wellington Office

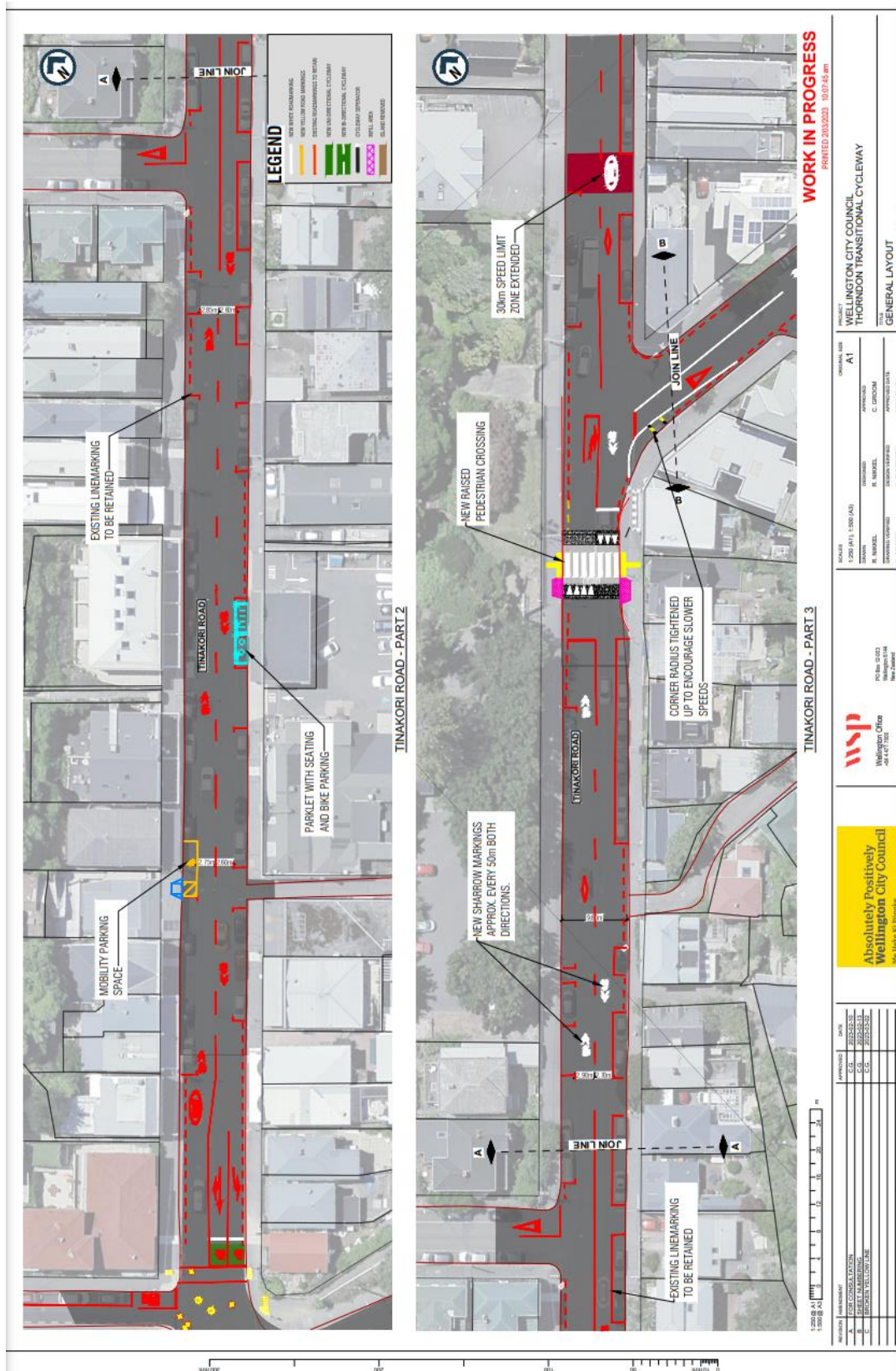
Absolutely Positively Wellington City Council



# We are proposing a change in your area

Absolutely Positively  
**Wellington City Council**

Me Heke Ki Pōneke



# We are proposing a change in your area

**Absolutely Positively  
Wellington City Council**

Me Heke Ki Pōneke

**LEGEND**

- NEW SHARROW MARKINGS
- EXISTING SHARROW MARKINGS
- NEW TRANSITIONAL CYCLEWAYS
- EXISTING TRANSITIONAL CYCLEWAYS
- NEW 2-DIRECTIONAL CYCLEWAYS
- EXISTING 2-DIRECTIONAL CYCLEWAYS
- NEW 1-DIRECTIONAL CYCLEWAYS
- EXISTING 1-DIRECTIONAL CYCLEWAYS
- NEW SPEED LIMIT
- EXISTING SPEED LIMIT
- NEW SPEED HUMP
- EXISTING SPEED HUMP
- NEW PEDESTRIAN CROSSING
- EXISTING PEDESTRIAN CROSSING
- NEW DRIVEWAY
- EXISTING DRIVEWAY
- NEW DRIVEWAY
- EXISTING DRIVEWAY
- NEW DRIVEWAY
- EXISTING DRIVEWAY
- NEW DRIVEWAY
- EXISTING DRIVEWAY
- NEW DRIVEWAY
- EXISTING DRIVEWAY
- NEW DRIVEWAY
- EXISTING DRIVEWAY
- NEW DRIVEWAY
- EXISTING DRIVEWAY

**HILL STREET - PART 1**

**HILL STREET - PART 2**

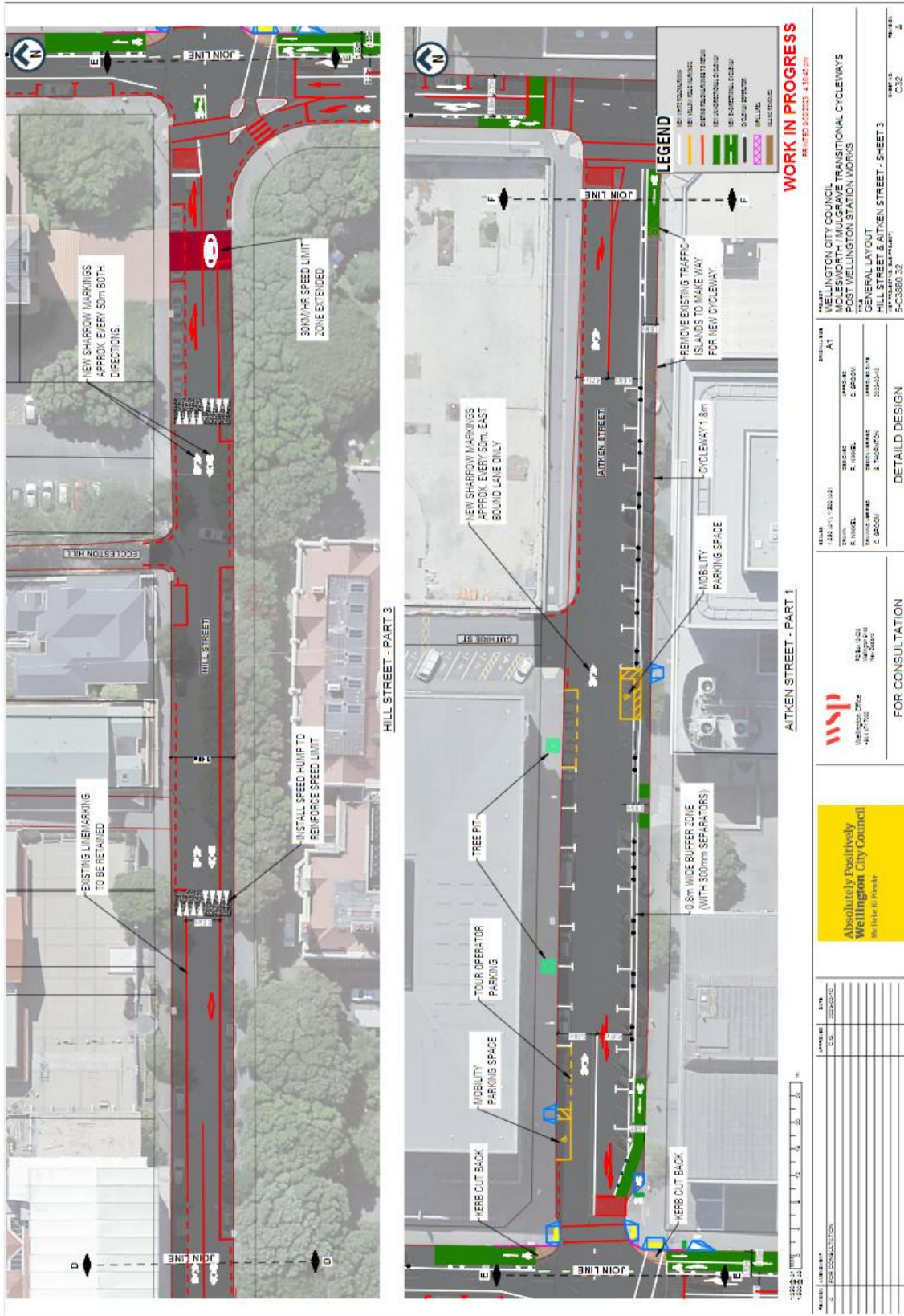
**WORK IN PROGRESS**

PRINTED: 10/02/2023 2:58:04 PM

PROJECT	WELLINGTON CITY COUNCIL	PROJECT No.	AT
	THORNDON TRANSITIONAL CYCLEWAYS	DATE	10/02/2023
	GENERAL LAYOUT	DRAWN BY	C. GOSWAMI
	HILL STREET - SHEET 2	CHECKED BY	C. GOSWAMI
	5038880.32	DESIGNED BY	A. HODGSON
		DATE	10/02/2023
		SCALE	AS SHOWN
		SHEET	2 OF 2
		FOR CONSULTATION	
		WSP	
		Wellington Office	
		401 PRINCE OF WELLES STREET	
		WELLINGTON	
		FOR CONSULTATION	

We are proposing a change in your area

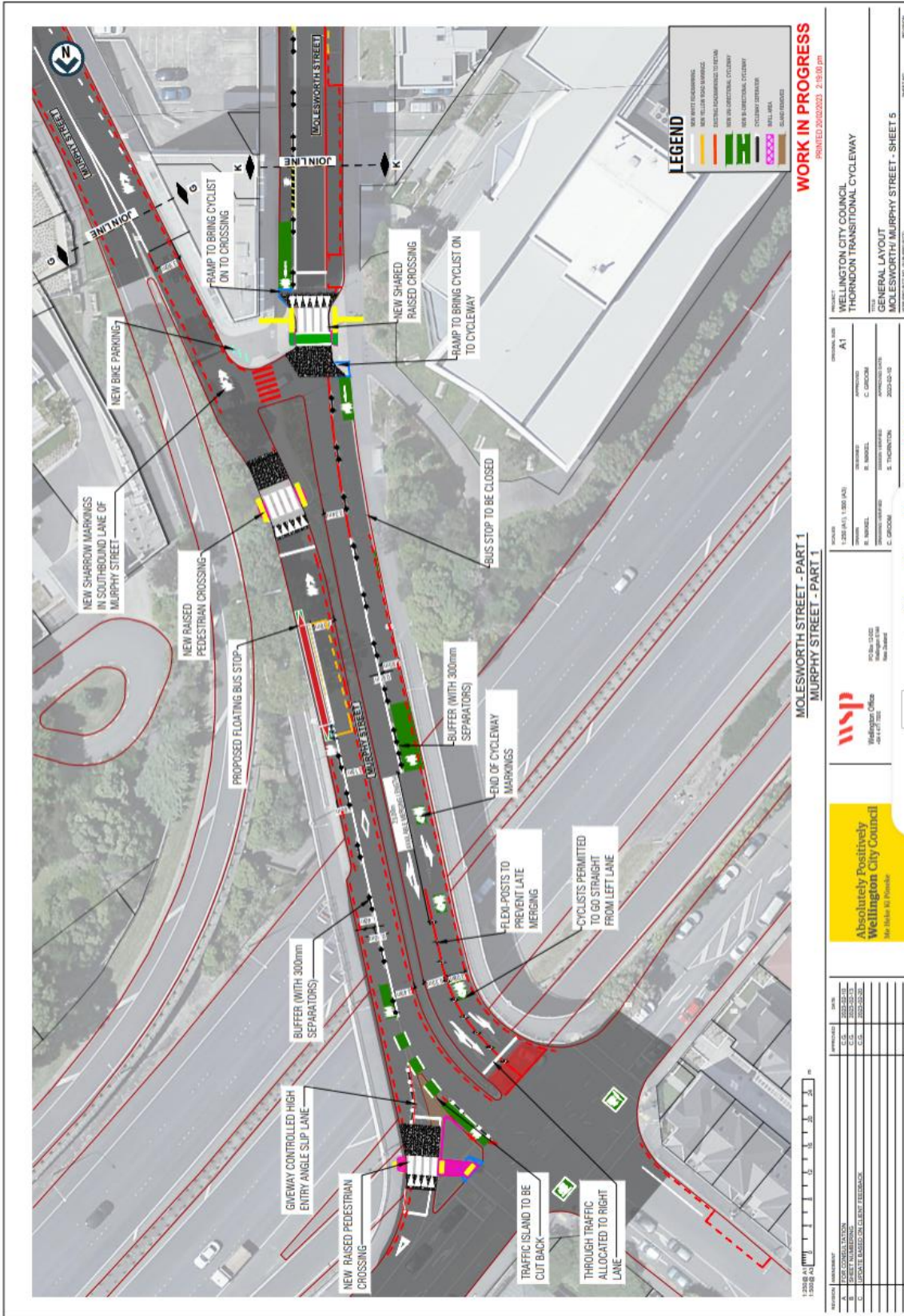
Absolutely Positively  
Wellington City Council  
Me Heke Ki Pōneke



# We are proposing a change in your area

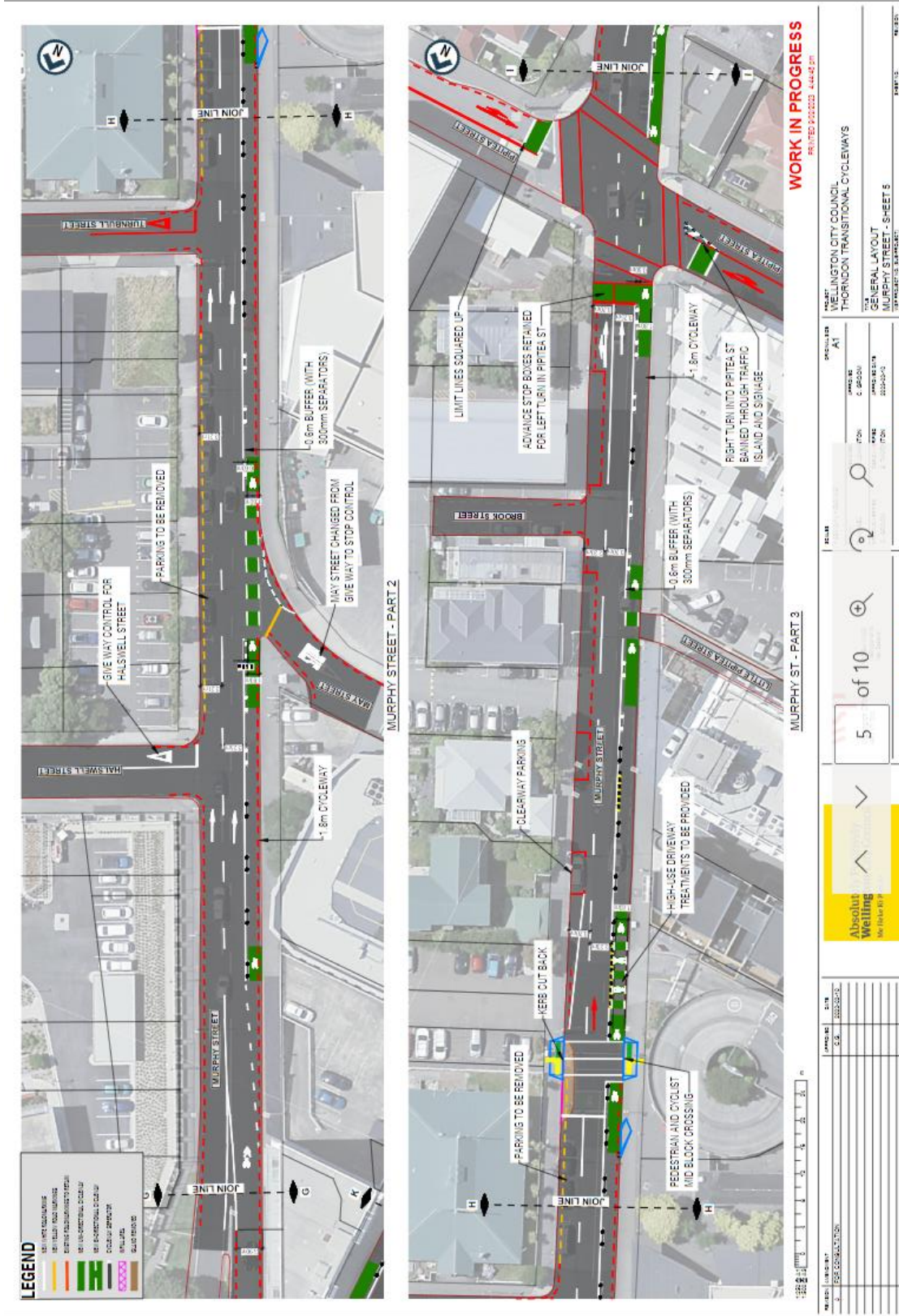
Absolutely Positively  
Wellington City Council

Me Heke Ki Pōneke



# We are proposing a change in your area

Absolutely Positively  
Wellington City Council  
Me Heke Ki Pōneke

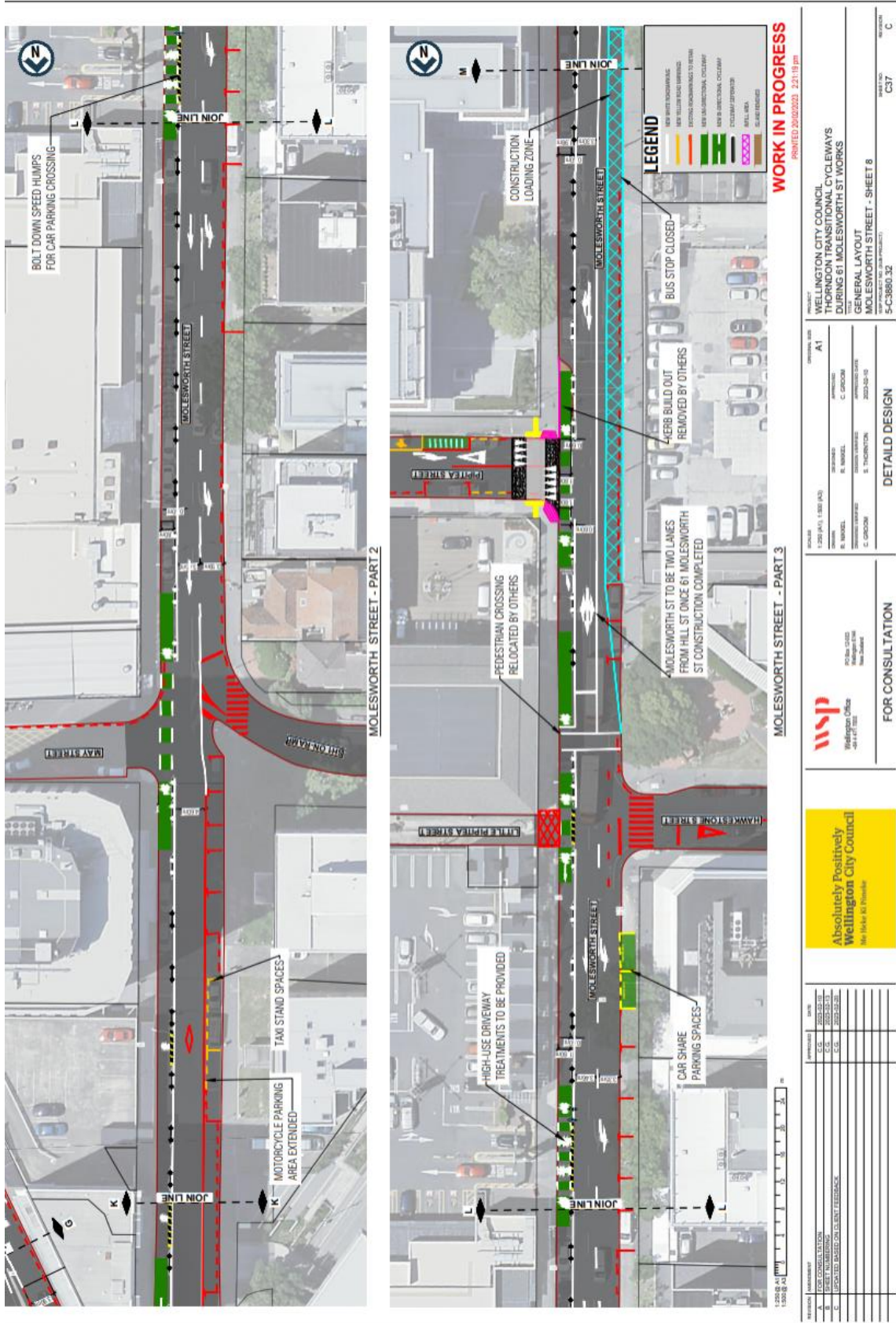




# We are proposing a change in your area

Absolutely Positively  
Wellington City Council

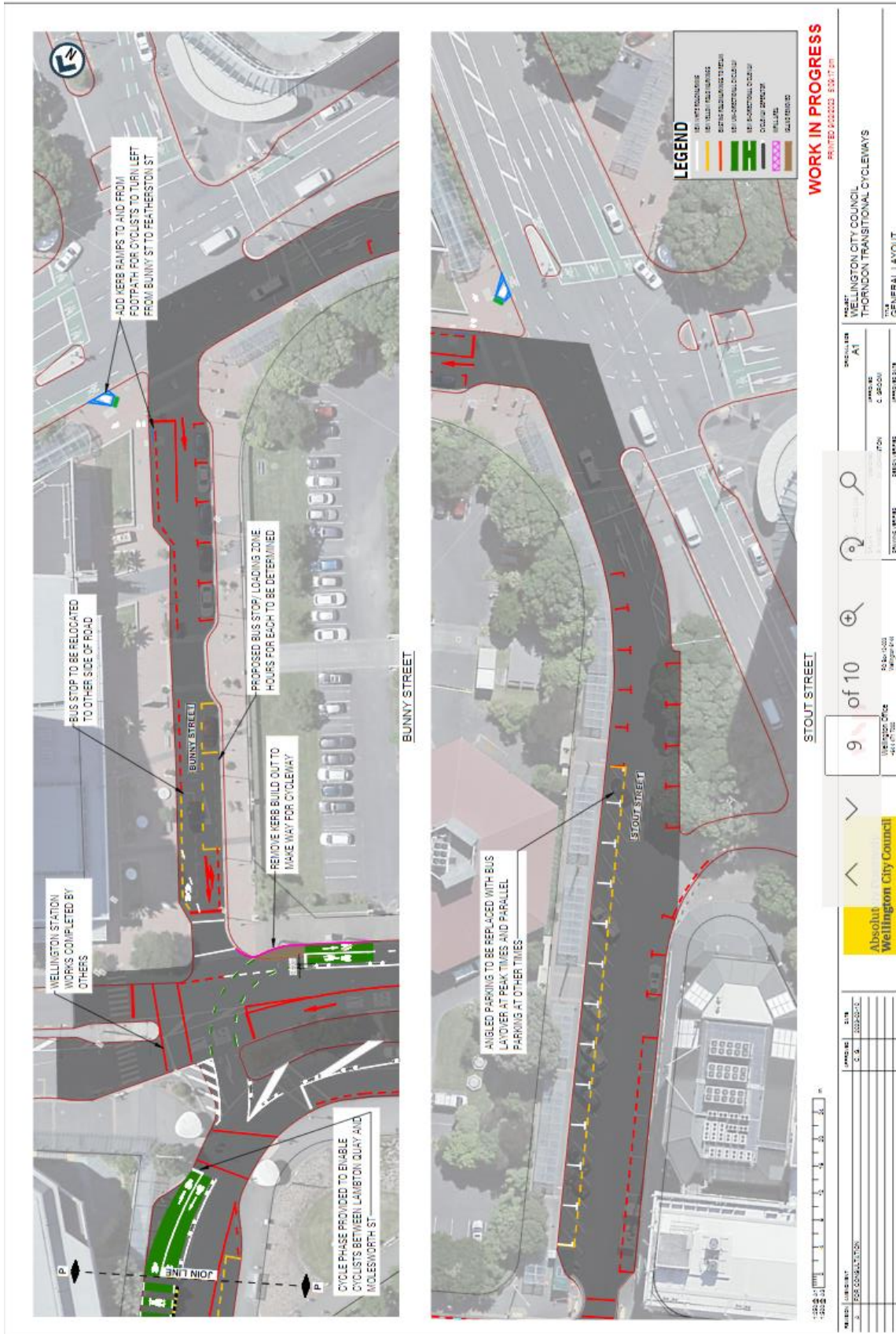
Me Heke Ki Pōneke





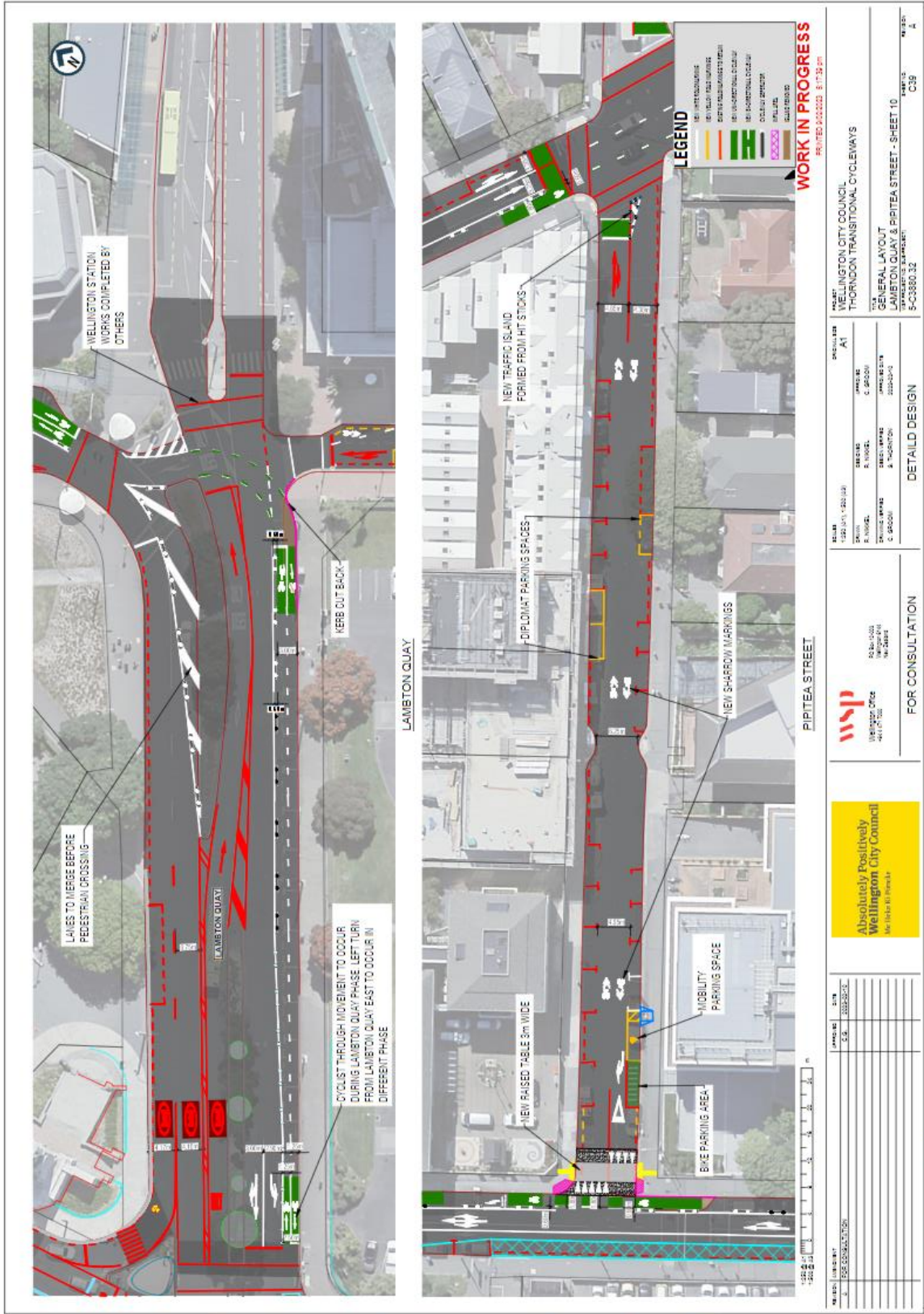


# We are proposing a change in your area



# We are proposing a change in your area

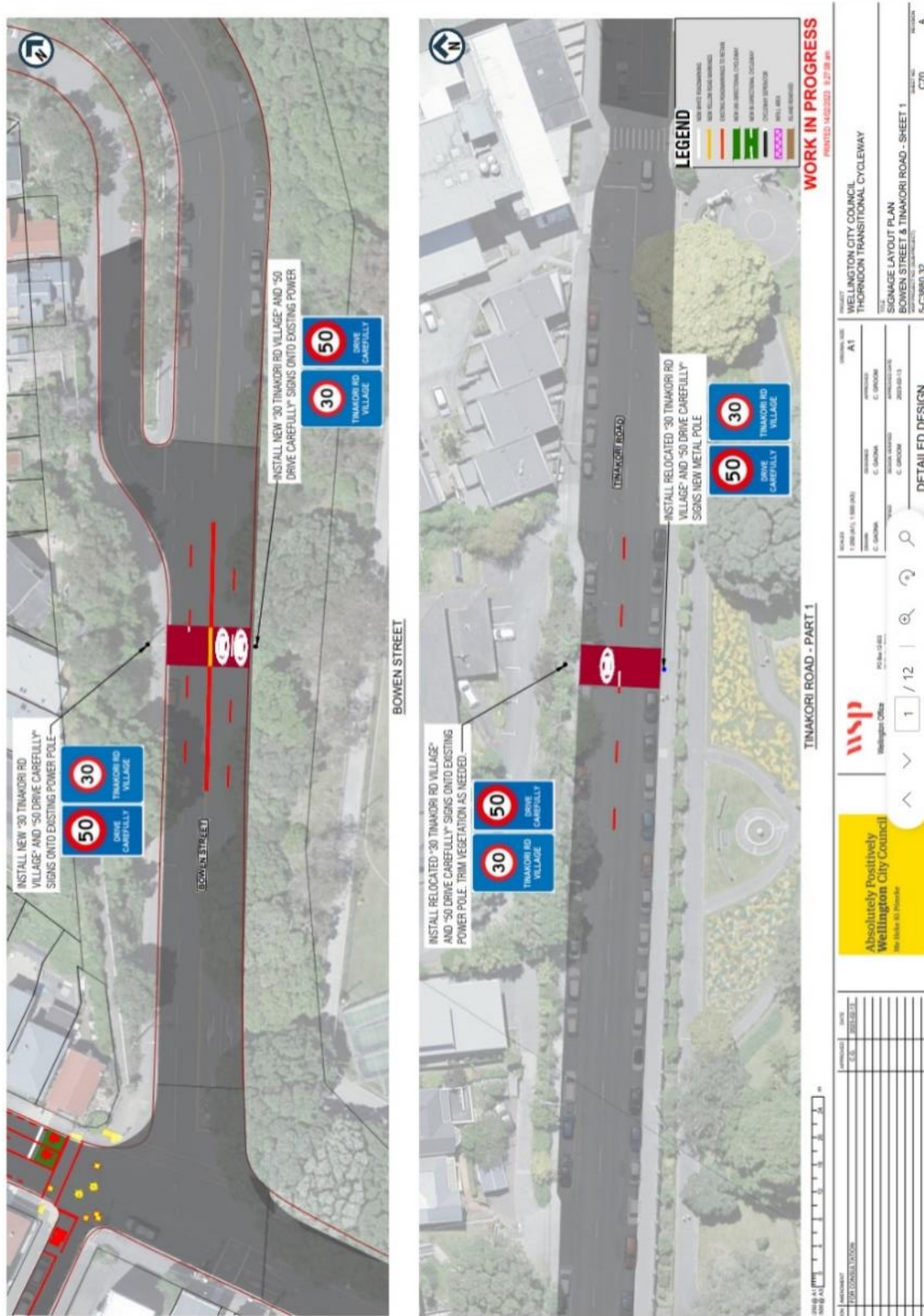
Absolutely Positively  
Wellington City Council  
Me Heke Ki Pōneke



# We are proposing a change in your area

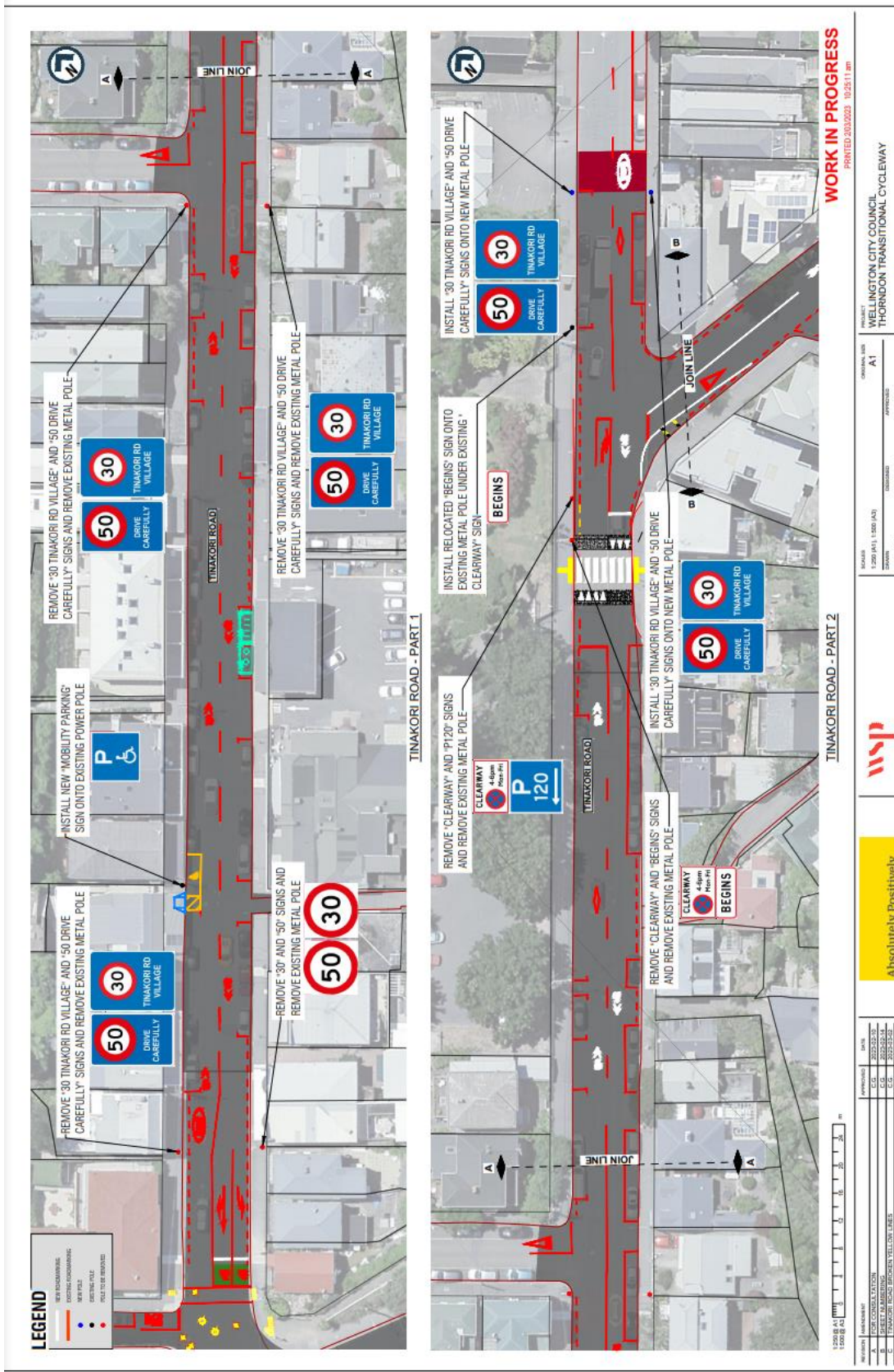
Absolutely Positively  
Wellington City Council  
Me Heke Ki Pōneke

## Traffic Resolution Plan: TR63-23 Thorndon Connections – Bike, bus, and pedestrian improvements



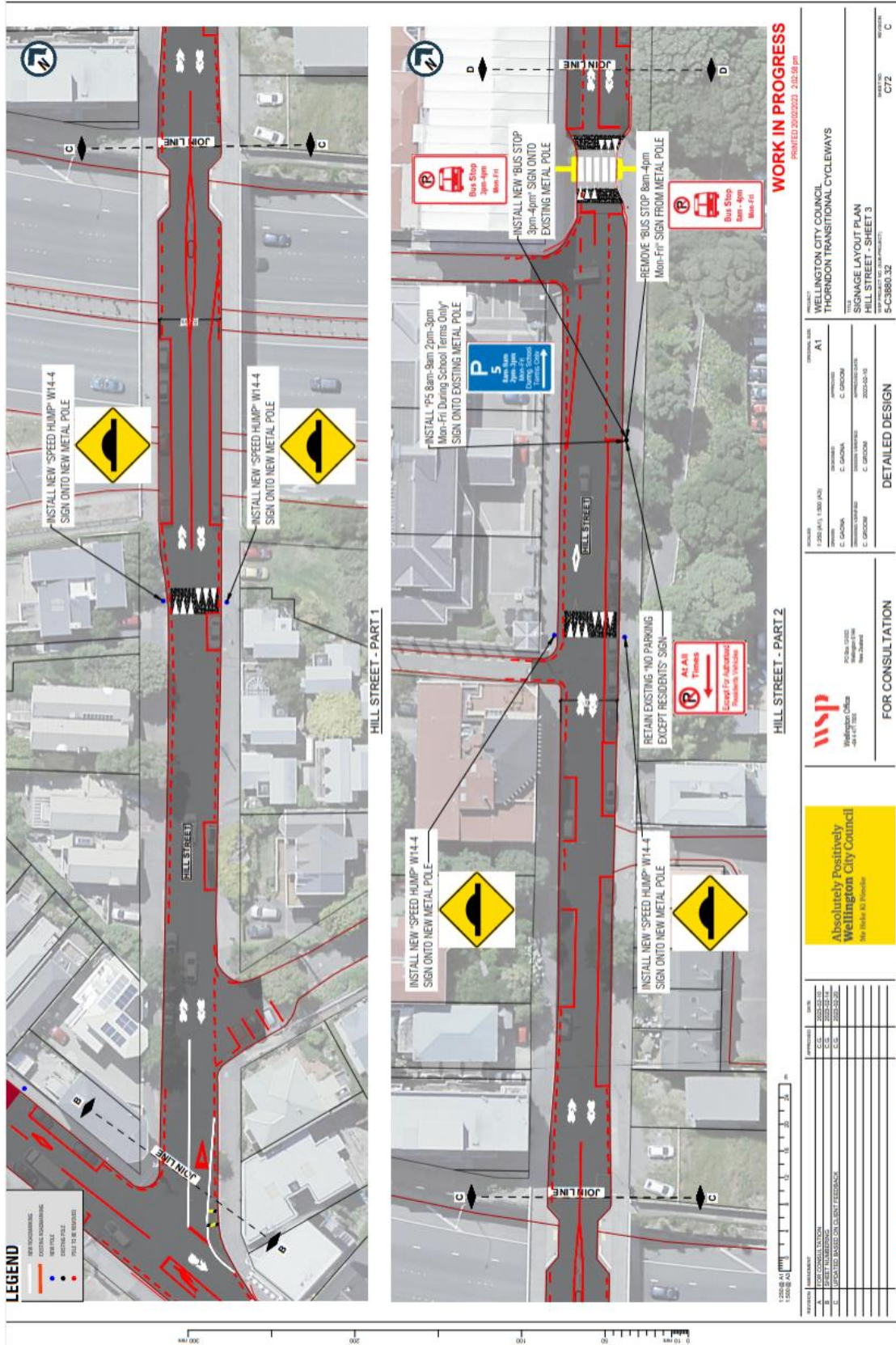
# We are proposing a change in your area

Absolutely Positively  
Wellington City Council  
Me Heke Ki Pōneke

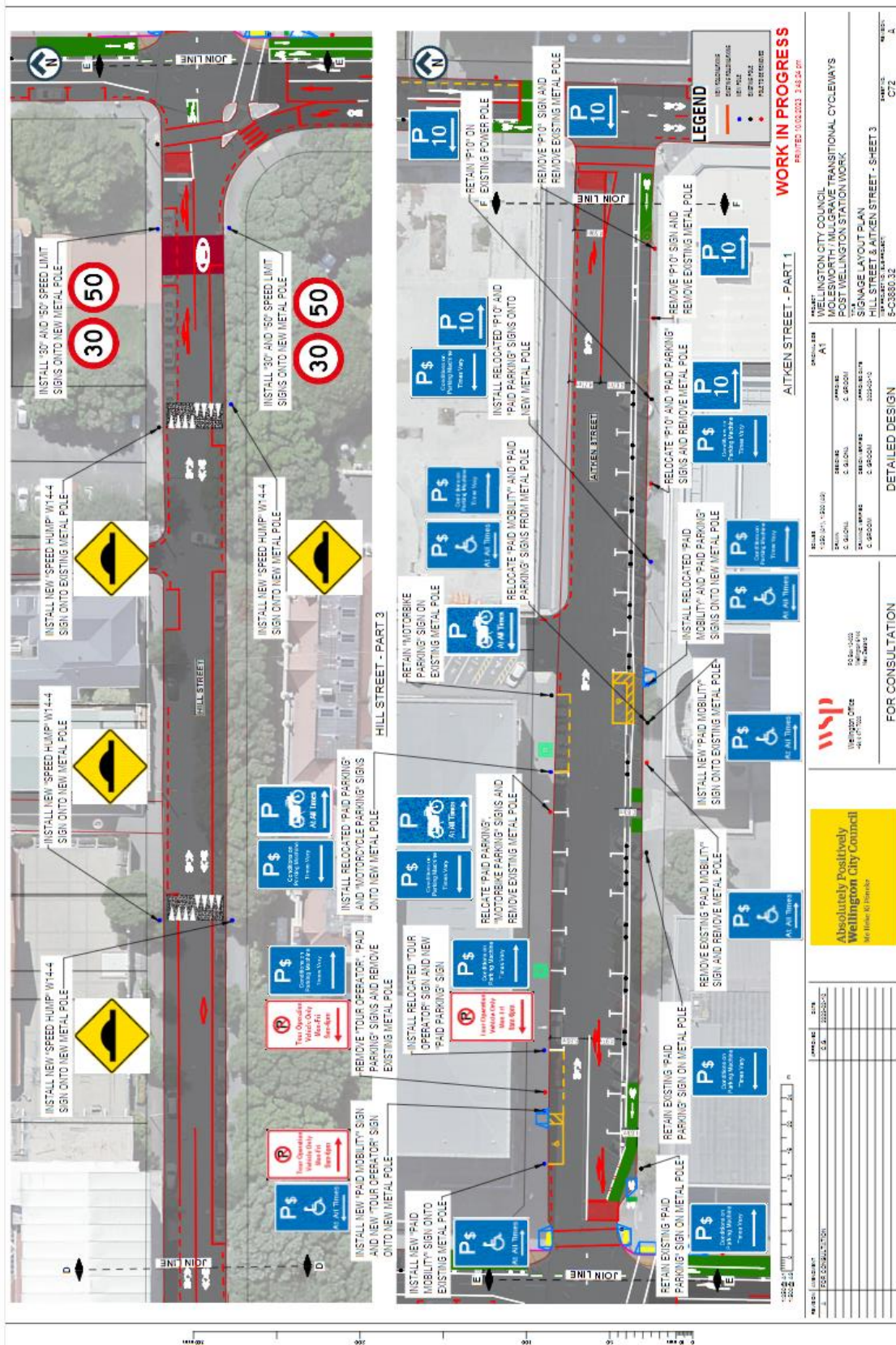


# We are proposing a change in your area

Absolutely Positively  
Wellington City Council  
Me Heke Ki Pōneke



# We are proposing a change in your area

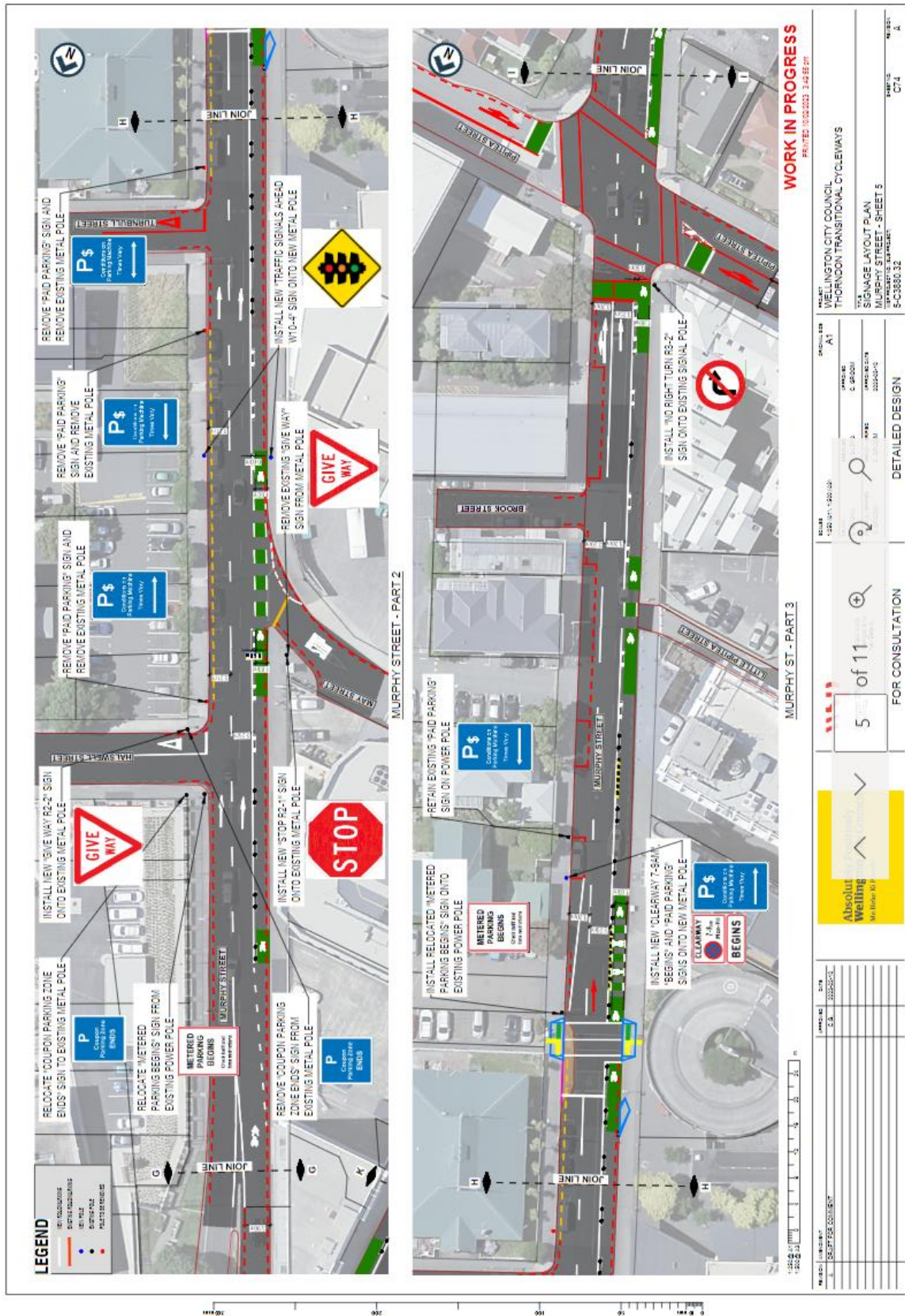




# We are proposing a change in your area

Absolutely Positively  
Wellington City Council

Me Heke Ki Pōneke

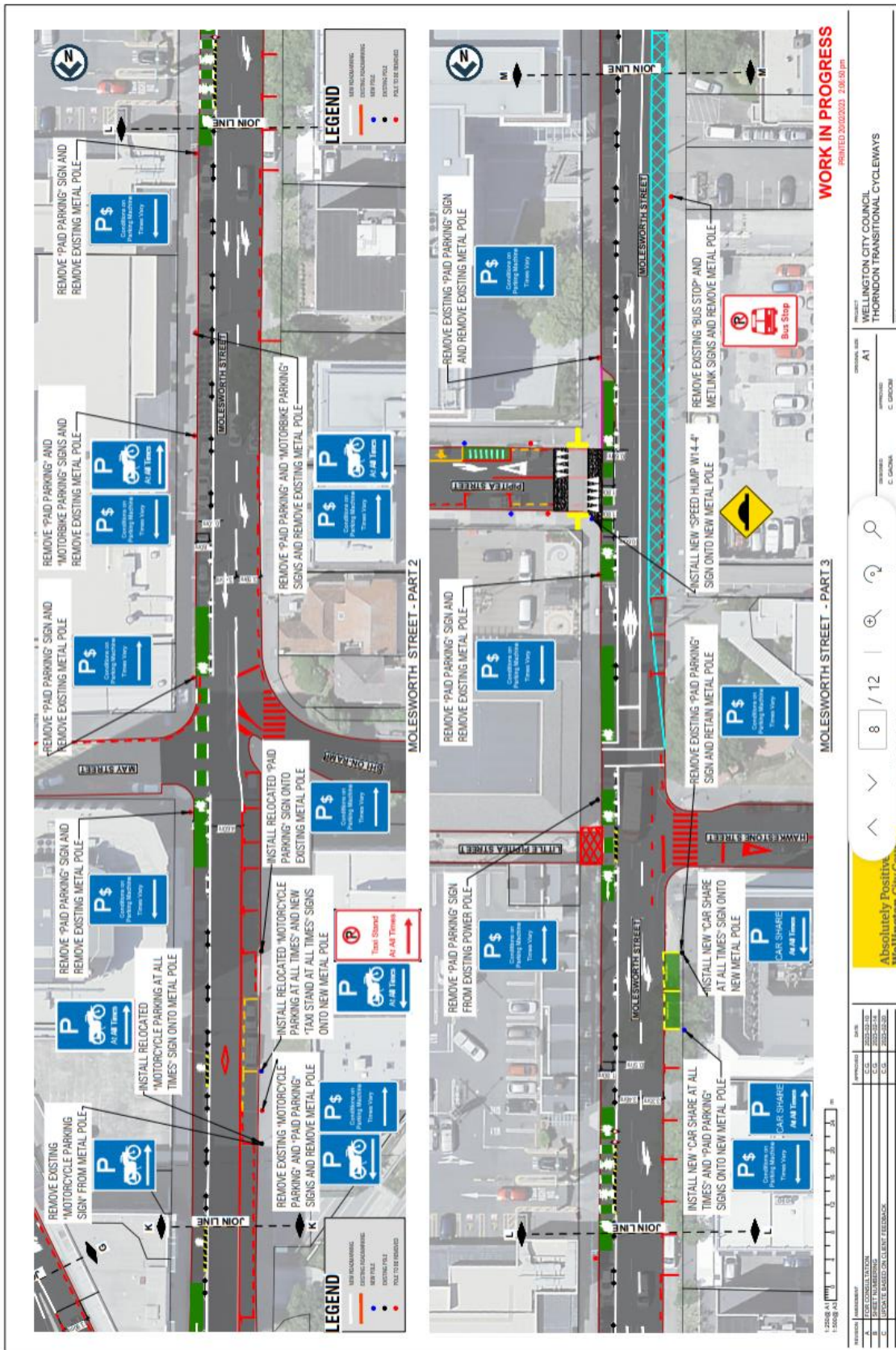






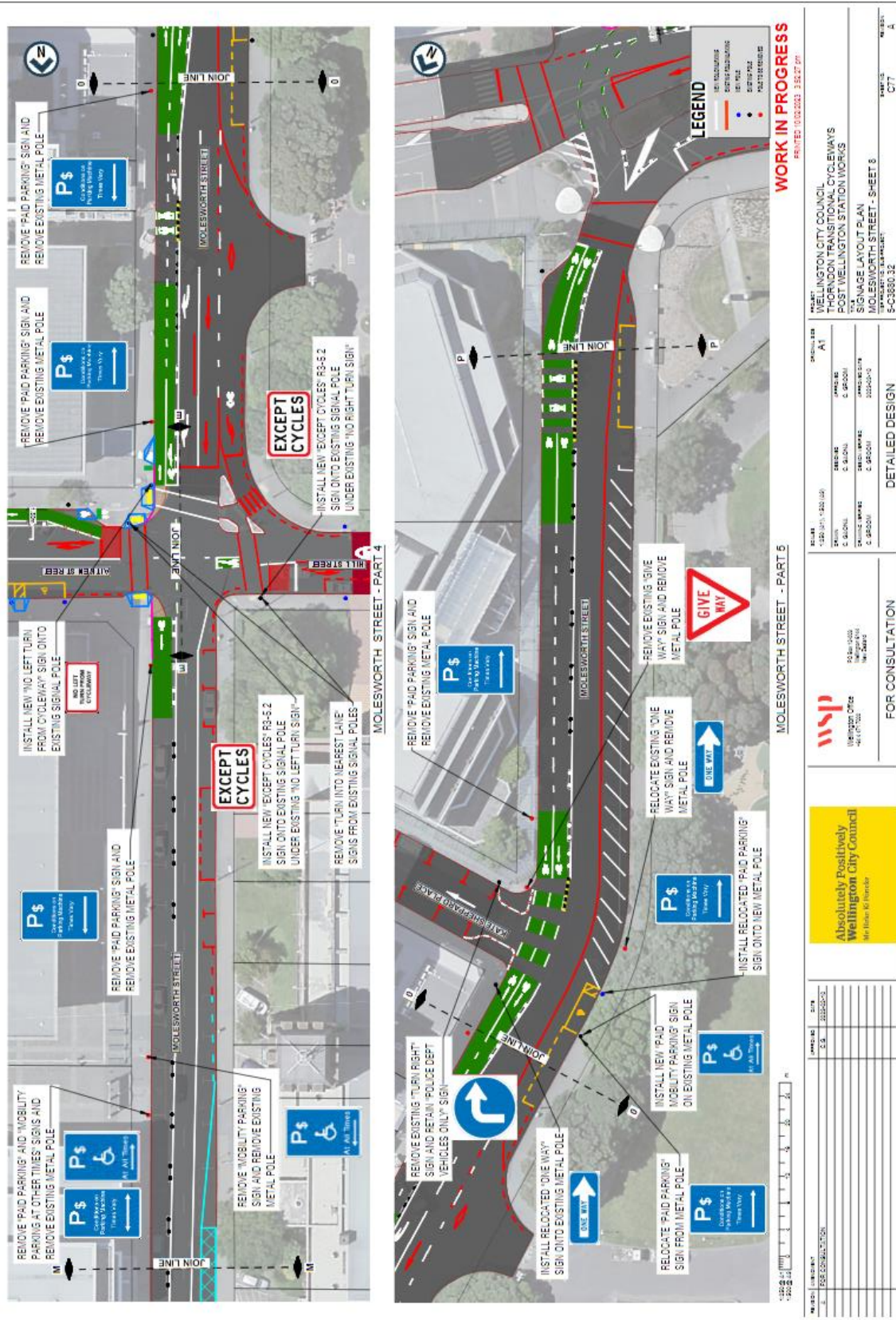
# We are proposing a change in your area

Absolutely Positively  
Wellington City Council  
Me Heke Ki Pōneke



# We are proposing a change in your area

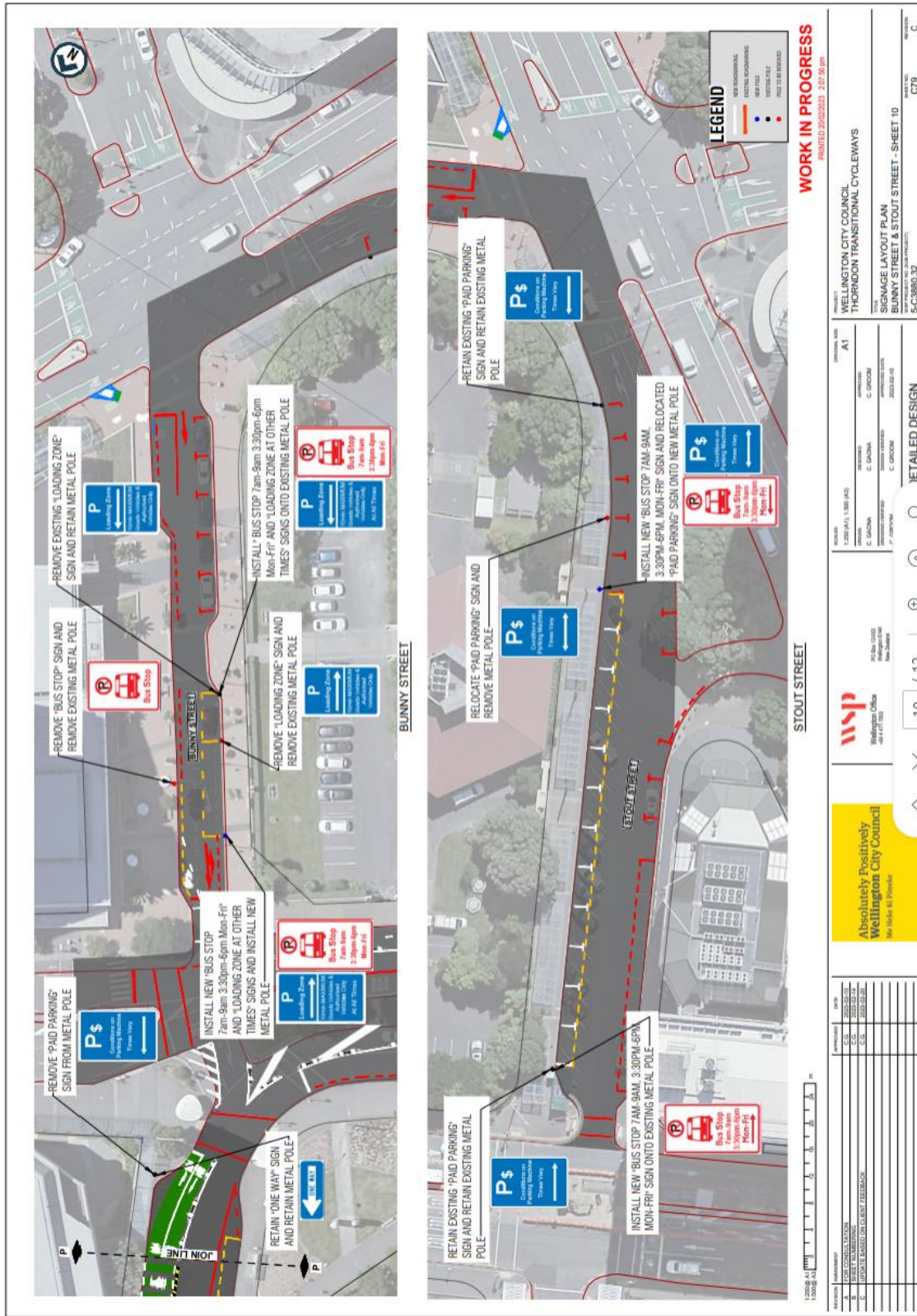
Absolutely Positively  
Wellington City Council  
Me Heke Ki Pōneke



# We are proposing a change in your area

**Absolutely Positively Wellington City Council**

Me Heke Ki Pōneke



**WORK IN PROGRESS**  
 PRINTED 20/02/2023 2:07:40 pm

PROJECT	WELLINGTON CITY COUNCIL THORNDON TRANSITIONAL CYCLEWAYS
DATE	12/02/2023 1:58:43
SCALE	A1
DESIGNER	C. GARDNER
APPROVED	C. GARDNER
DATE APPROVED	2023-02-02
PROJECT NO.	5C-38601.32

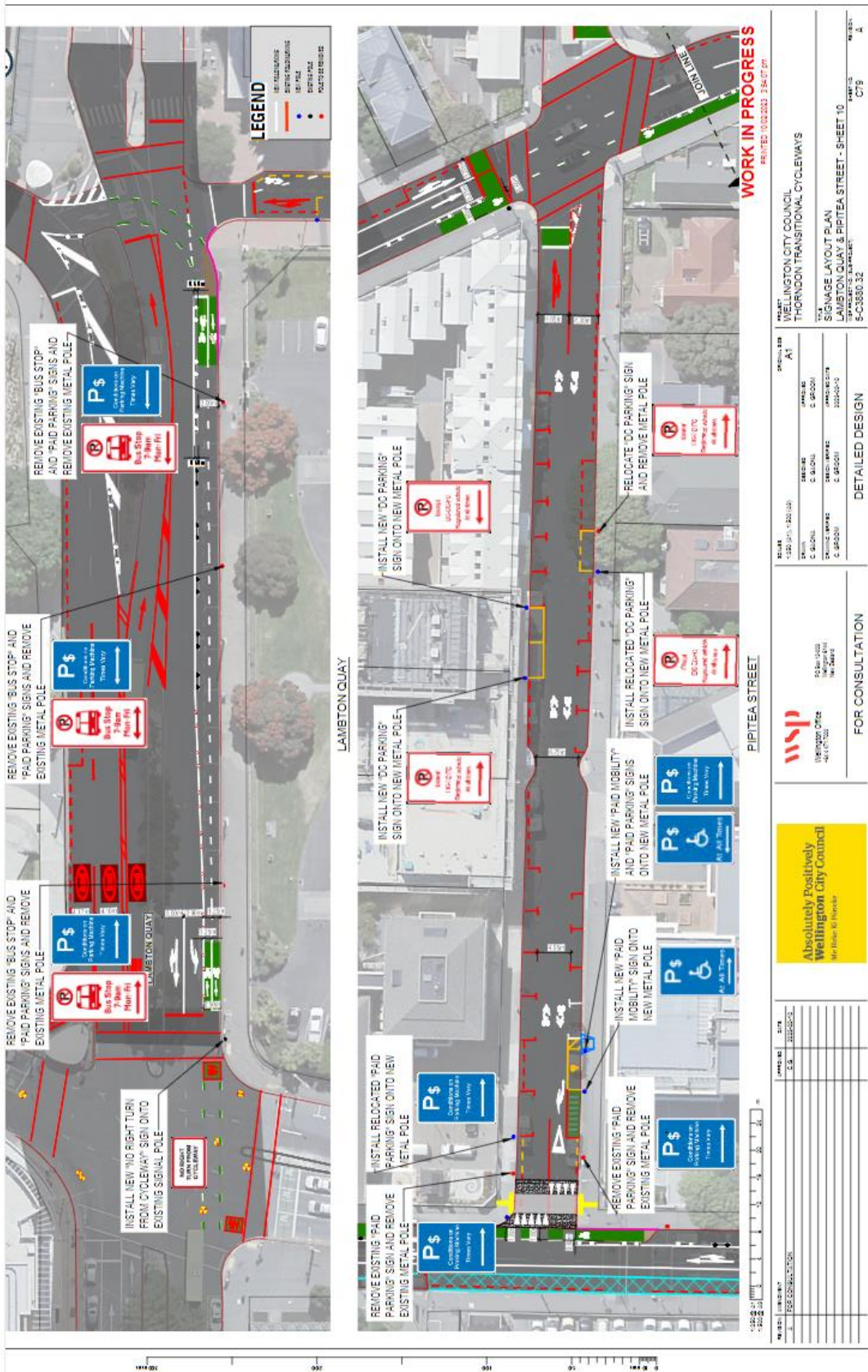
DATE	12/02/2023 1:58:43
SCALE	A1
DESIGNER	C. GARDNER
APPROVED	C. GARDNER
DATE APPROVED	2023-02-02
PROJECT NO.	5C-38601.32

**Absolutely Positively Wellington City Council**  
 No Heke Ki Pōneke

DATE	12/02/2023 1:58:43
SCALE	A1
DESIGNER	C. GARDNER
APPROVED	C. GARDNER
DATE APPROVED	2023-02-02
PROJECT NO.	5C-38601.32

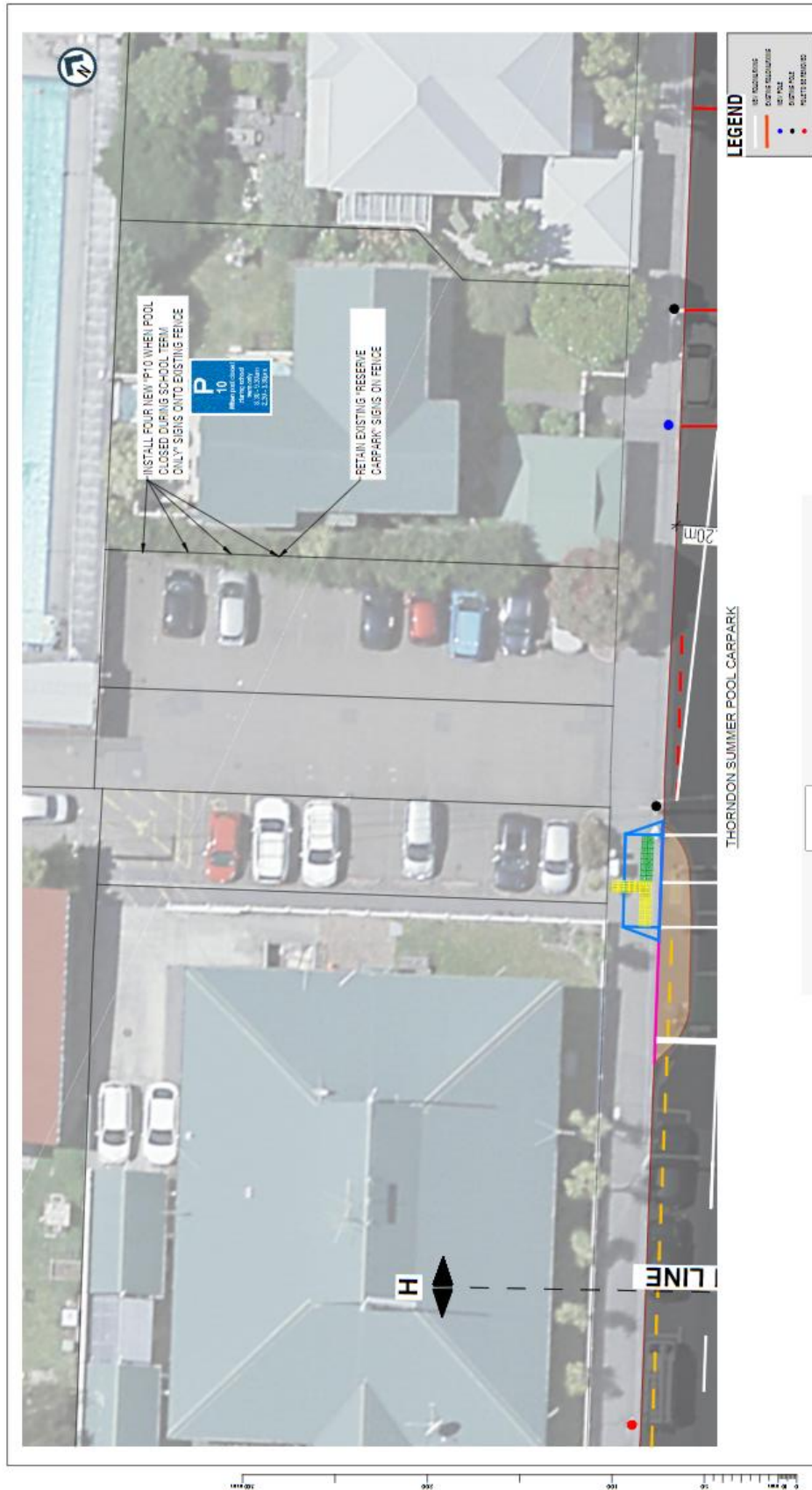
# We are proposing a change in your area

Absolutely Positively  
Wellington City Council  
Me Heke Ki Pōneke



# We are proposing a change in your area

Absolutely Positively  
Wellington City Council  
Me Heke Ki Pōneke



# We are proposing a change in your area

## Legal Description:

### Add to Schedule A (Time Limited) of the Traffic Restrictions Schedule

Column One	Column Two	Column Three
<b>Hill Street</b>	<i>P5, pick up and drop off 8am-9am and 2:00pm-3:00pm Monday – Friday during School term only.</i>	<i>South side, commencing 192 metres west of its intersection with Molesworth Street (Grid coordinates x= 1748879.3 m, y= 5428968.6 m), and extending in a westerly direction following the southern kerbline for 34 metres.</i>
<b>Aitken Street</b>	<i>P10, Monday to Sunday 8:00am - 8:00pm</i>	<i>South side, commencing at 35 metres west of its intersection with Mulgrave Street (Grid coordinates x= 1,749,059.88 m, y= 5,428,956.81 m), and extending in a westerly direction following the southern kerbline for 23 metres. (4 Parallel Parks)</i>
<b>Thorndon Pool Carpark</b>	<i>P10 pick up and drop off during school term only, 8:30am-9:30am and 2:30pm-3:30pm metered parking at other times</i>	<i>South side, commencing 19 metres east of its intersection with Murphy Street (Grid coordinates x= 1,749,019.78 m, y= 5,429,236.4 m), and extending in an easterly direction following the southern kerbline for 10 metres. (4 angled Parks)</i>
<b>Tinakori Road</b>	<i>P60, Monday – Saturday 8:00am-6:00pm</i>	<i>West side, commencing 31 metres north of its intersection with Lewisville Terrace (Grid Coordinates x= 1748176.1 m, y= 5428795.7 m), and extending in a northerly direction following the western kerbline for 60 metres.</i>
<b>Tinakori Road</b>	<i>P60, Monday – Saturday 8:00am-6:00pm</i>	<i>West side, commencing 97 metres north of its intersection with Lewisville Terrace (Grid Coordinates x= 1748176.1 m, y= 5428795.7 m), and extending in a northerly direction following the western kerbline for 30.8 metres.</i>

### Add to Schedule B (Class restricted) of the Traffic Restrictions Schedule

Column One	Column Two	Column Three
<b>Hill Street</b>	<i>Bus Stop, Monday to Friday, 9:00am - 2:00pm</i>	<i>South side, commencing 192 metres west of its intersection with Molesworth Street (Grid coordinates x= 1748879.3 m, y= 5428968.6 m), and</i>

# We are proposing a change in your area

		<i>extending in a westerly direction following the southern kerbline for 34 metres.</i>
<b>Aitken Street</b>	<i>Tour Operation Bus Stop, Monday to Sunday 9:00am - 6:00pm</i>	<i>North side, commencing 21 metres east of its intersection with Molesworth Street (Grid coordinates x= 1748892.57 m, y= 5428977.36 m), and extending in an easterly direction following the kerbline for 12 metres.</i>
<b>Aitken Street</b>	<i>Motorcycle Parking, At All Times</i>	<i>North side, commencing 75 metres east of its intersection with Molesworth Street (Grid Coordinates X= 1748892.57 m, Y= 5428977.36 m) and extending in an easterly direction following the northern footpath for 11.5 metres.</i>
<b>Pipitea Street</b>	<i>Diplomatic Corps parking, At all times</i>	<i>North side, commencing 81.5 metres east of its intersection with Molesworth Street (Grid Coordinates X= 1,748,902.88 m, Y= 5,429,141.45 m) and extending in an easterly direction following the kerbline for 12 metres. (2 Parallel parks)</i>
<b>Pipitea Street</b>	<i>Diplomatic Corps parking, At all times</i>	<i>South side, commencing 54 metres west of its intersection with Murphy Street (Grid Coordinates X= 1749059.09 m, Y= 5429124.62 m) and extending in a westerly direction following the kerbline for 6 metres. (1 parallel carpark)</i>
<b>Molesworth Street</b>	<i>Taxi stand, At all times</i>	<i>West side, commencing 39 metres north of its intersection with SH1 (Grid Coordinates X= 1748904.2 m, Y= 5429337.31 m) and extending in a northerly direction following the western kerb line for 12 metres. (2 Parallel parks)</i>
<b>Molesworth Street</b>	<i>Motorcycle parking, At all times</i>	<i>West side, commencing 51 metres north of its intersection with SH1 (Grid Coordinates X= 1748904.2 m, Y= 5429337.31 m) and extending in a northerly direction following the western kerb line for 10 metres. (2 Parallel parks)</i>
<b>Molesworth Street</b>	<i>Carshare spaces, At all times</i>	<i>West side, commencing 13 metres north of its intersection with Hawkestone Street (Grid Coordinates X= 1,748,896.6 m, Y= 5,429,195.5 m) and extending in a northerly direction following the western kerbline for 10 metres. (2 parallel carparks)</i>



# We are proposing a change in your area

<b>Bunny Street</b>	<i>Bus Stop, 7am –9am and 3:30pm-6:00pm Monday – Friday</i>	<i>Southwest side, commencing 54 metres northwest of its intersection with Stout Street (Grid Coordinates X= 1748990.1 m, Y= 5428684.4 m) and extending in a north-westerly direction following the kerbline for 12 metres.</i>
<b>Bunny Street</b>	<i>Loading Zone 9am-3:30pm and 6:00pm-7:00am Monday – Friday.</i>	<i>Southwest side, commencing 54 metres northwest of its intersection with Stout Street (Grid Coordinates X= 1748990.1 m, Y= 5428684.4 m) and extending in a north-westerly direction following the kerbline for 12 metres.</i>
<b>Stout Street</b>	<i>Bus stop 7:00am-9:00am and 3:30pm-6:00pm Monday - Friday</i>	<i>Northwest side, following the kerbline 12 metres northeast of its intersection with Whitmore Street (Grid coordinates x= 1748887.8 m, y= 5428591.3 m), and extending in a north-easterly direction for 72.5 metres. (12 parallel carparks)</i>

## Add to Schedule C (Direction) of the Traffic Restrictions Schedule

<b>Column One</b>	<b>Column Two</b>	<b>Column Three</b>
<b>Kate Shepard Place</b>	<i>One way restriction</i>	<i>Eastbound, from Molesworth Street to Mulgrave Street.</i>

## Add to Schedule D (No Stopping) of the Traffic Restrictions Schedule

<b>Column One</b>	<b>Column Two</b>	<b>Column Three</b>
<b>Hill Street</b>	<i>No Stopping, At All Times</i>	<i>South side, commencing 322.5 metres west of its intersection with Molesworth Street (Grid coordinates x= 1748879.3 m, y= 5428968.6 m), and extending in a westerly direction following the southern kerbline for 18.5 metres.</i>
<b>Pipitea Street</b>	<i>No Stopping, At All Times</i>	<i>South side, commencing 133.9 metres west of its intersection with Murphy Street (Grid Coordinates X= 1749059.09 m, Y= 5429124.62 m) and extending in a westerly direction following the southern kerbline for 22 metres.</i>

## We are proposing a change in your area

<b>Pipitea Street</b>	<i>No Stopping, At All Times</i>	North side, commencing 18.5 metres east of its intersection with Molesworth Street (Grid Coordinates X= 1,748,902.88 m, Y= 5,429,141.45 m) and extending in an easterly direction following the kerbline for 6 metres.
<b>Bunny Street</b>	<i>No Stopping, At All Times</i>	Northeast side, commencing 64 metres northwest of its intersection with Stout Street (Grid Coordinates X= 1,748,989.9 m, Y= 5,428,684.4m) and extending in a north-westerly direction following the kerb line for 15.5 metres.
<b>Murphy Street</b>	<i>No Stopping, At All Times</i>	East side, commencing 4.5 metres south of its intersection with Halswell Street (Grid Coordinates X= 1748970.3 m, Y= 5429354.9 m) and extending in a southerly direction following the eastern kerbline for 56.5 metres.
<b>Murphy Street</b>	<i>No Stopping, At All Times</i>	East side, commencing 6 metres south of its intersection with Turnbull Street (Grid Coordinates X= 1749001.3 m, Y= 5429280.8 m) and extending in a southerly direction following the eastern kerbline for 17.5 metres.
<b>Mulgrave Street</b>	<i>No Stopping, At All Times</i>	East side, commencing 5.5 metres south of its intersection with Pipitea Street (Grid Coordinates X= 1749073.5 m, Y= 5429116.8 m) and extending in a southerly direction following the kerbline for 32 metres.
<b>Mulgrave Street</b>	<i>No Stopping, At All Times</i>	East side, commencing 110.5 metres south of its intersection with Pipitea Street (Grid Coordinates X= 1749073.5 m, Y= 5429116.8 m) and extending in a southerly direction following the kerbline for 29 metres.
<b>Tinakori Road</b>	<i>No Stopping, At All Times</i>	West side, commencing 93.5 metres north of its intersection with Upton Terrace Street (Grid Coordinates X= 1748291.7m, Y= 5428920.7m) and extending in a northerly direction following the western kerbline for 6 metres

# We are proposing a change in your area

## Add to Schedule F (Metered Parking) of the Traffic Restrictions Schedule

Column One	Column Two	Column Three
<b>Aitken Street</b>	<i>Metered parking, time varies</i>	<i>South side, commencing 58 metres west of its intersection with Mulgrave Street (Grid coordinates x= 1,749,059.88 m, y= 5,428,956.81 m), and extending in a westerly direction following the southern kerbline for 18 metres. (3 Parallel Parks)</i>
<b>Aitken Street</b>	<i>Metered parking, time varies</i>	<i>South side, commencing 107 metres west of its intersection with Mulgrave Street (Grid coordinates x= 1,749,059.88 m, y= 5,428,956.81 m), and extending in a westerly direction following the southern kerbline for 42 metres. (7 Parallel Parks)</i>
<b>Aitken Street</b>	<i>Metered parking, time varies</i>	<i>North side, commencing 33 metres east of its intersection with Molesworth Street (Grid coordinates x= 1748891.7 m, y= 5428977.1 m), and extending in an easterly direction following the northern kerbline for 36 metres. (6 Parallel Parks)</i>
<b>Pipitea Street</b>	<i>Metered parking, time varies</i>	<i>South side, commencing 108.5 metres west of its intersection with Murphy Street (Grid Coordinates X= 1749059.09 m, Y= 5429124.62 m) and extending in a westerly direction following the southern kerbline for 24 metres. (4 parallel carparks)</i>
<b>Pipitea Street</b>	<i>Metered parking, time varies</i>	<i>North side, commencing 13.5 metres east of its intersection with Molesworth Street (Grid Coordinates X= 1,748,902.88 m, Y= 5,429,141.45 m) and extending in an easterly direction following the kerbline for 6 metres. (1 parallel carparks)</i>
<b>Aitken Street</b>	<i>Mobility Park, Vehicles displaying an Operation Mobility Permit only, Metered parking, time varies</i>	<i>South side, commencing 58 metres west of its intersection with Mulgrave Street (Grid coordinates x= 1,749,059.88 m, y= 5,428,956.81 m), and extending in a westerly direction following the southern kerbline for 9 metres. (1 Parallel Parks)</i>

# We are proposing a change in your area

<b>Aitken Street</b>	Mobility Park, Vehicles displaying an Operation Mobility Permit only, metered parking, Metered parking, time varies	North side, commencing 14 metres east of its intersection with Molesworth Street (Grid coordinates $x= 1748891.7$ m, $y=$ $5428977.1$ m), and extending in an easterly direction following the northern kerbline for 7 metres.
<b>Pipitea Street</b>	Mobility Park, Vehicles displaying an Operation Mobility Permit only, metered parking, Metered parking, time varies	South side, commencing 126.9 metres west of its intersection with Murphy Street (Grid Coordinates $X= 1749059.09$ m, $Y=$ $5429124.62$ m) and extending in a westerly direction following the southern kerbline for 7 metres.
<b>Molesworth Street</b>	Mobility Park, Vehicles displaying an Operation Mobility Permit only, metered parking, Metered parking, time varies	West side, following the kerbline 124 metres north of its intersection with Lambton Quay (Grid Coordinates $X=$ $1748918.73$ m, $Y= 5428777.21$ m) and extending in a northerly direction for 9 metres.
<b>Molesworth Street</b>	Metered parking, time varies	West side, following the kerbline 39.5 metres north of its intersection with Lambton Quay (Grid Coordinates $X=$ $1748918.73$ m, $Y= 5428777.21$ m) and extending in a northerly direction for 84.5 metres. (21 angle and 1 parallel carparks)
<b>Stout Street</b>	P120 Maximum, Monday to Friday 9:00am-3:30pm – 6:00pm-8:00pm. Saturday and Sunday 8:00am-8:00pm	Northwest side, following the kerbline 12 metres northeast of its intersection with Whitmore Street (Grid coordinates $x=$ $1748887.8$ m, $y= 5428591.3$ m), and extending in a north-easterly direction for 72.5 metres. (12 parallel carparks)
<b>Tinakori Road</b>	Mobility Park, Vehicles displaying an Operation Mobility Permit only, metered parking, Metered parking, time varies	West side, commencing 90 metres north of its intersection with Lewisville Terrace (Grid Coordinates $x= 1748176.1$ m, $y= 5428795.7$ m), and extending in a northerly direction following the western kerbline for 7 metres.
<b>Mulgrave Street</b>	Metered parking, time varies	East side, commencing 38 metres south of its intersection with Pipitea Street (Grid Coordinates $X= 1749073.5$ m, $Y=$ $5429116.8$ m) and extending in a southerly direction following the kerbline for 6 metres. (1 parallel park)

# We are proposing a change in your area

<b>Mulgrave Street</b>	<i>P120 Maximum, Monday to Thursday 9:00am - 6:00pm, Friday 9:00am - 8:00pm, Saturday 8:00am - 6:00pm</i>	<i>East side, commencing 105.5 metres south of its intersection with Pipitea Street (Grid Coordinates X= 1749073.5 m, Y= 5429116.8 m) and extending in a southerly direction following the kerbline for 5 metres. (1 parallel carparks)</i>
------------------------	---	---

Add to Schedule G (Give Way and Stop) of the Traffic Restrictions Schedule

Column One	Column Two	Column Three
<b>May Street</b>	<i>Stop Control</i>	<i>May Street at its intersection with Murphy Street (Grid coordinates X= 1,748,969.3 m Y= 5,429,330.9 m)</i>
<b>Halswell Street</b>	<i>Give Way</i>	<i>Halswell Street at its intersection with Murphy Street (Grid coordinates X= 1,748,970.3 m Y= 5,429,354.9 m)</i>

Add to Schedule H (Pedestrian Crossing) of the Traffic Restrictions Schedule

Column One	Column Two	Column Three
<b>Molesworth Street</b>	<i>Dual Pedestrian and Cyclist Zebra Crossing (Toucan Zebra Crossing)</i>	<i>West side, commencing 98 metres north of its intersection with SH1 (Grid Coordinates X= 1748904.2 m, Y= 5429337.31 m) and extending in a northerly direction following the western kerb line for 8 metres.</i>

Add to Schedule I (Cycle Lane) of the Traffic Restrictions Schedule

Column One	Column Two	Column Three
<b>Aitken Street</b>	<i>Cycle lane, at all times</i>	<i>South side, commencing at 6 metres west of its intersection with Mulgrave Street (Grid coordinates x= 1,749,059.88 m, y= 5,428,956.81 m), and extending in a westerly direction following the southern kerbline for 156 metres.</i>
<b>Molesworth Street</b>	<i>Bi-directional cycle lane, at all times</i>	<i>East side, commencing at its intersection with Lambton Quay (Grid coordinates x= 1,748,926.7 m, y= 5,428,786.70 m), and extending in a northly direction following the eastern kerbline for 182 metres.</i>

# We are proposing a change in your area

<b>Molesworth Street</b>	<i>Cycle lane, at all times</i>	<i>East side, commencing at its intersection with Aitken Street (Grid coordinates x= 1,748,892.2 m, y= 5,428,976.7 m), and extending in a northly direction following the eastern kerbline for 443 metres.</i>
<b>Molesworth Street</b>	<i>Cycle lane, at all times</i>	<i>West side, commencing 60 meters south of its intersection with Tinakori Road (Grid coordinates x= 1,748,880.82 m, y= 5,429,544.4 m), and extending in a southerly direction following the western kerbline for 55 metres.</i>
<b>Lambton Quay</b>	<i>Bi- directional cycle lane, at all times</i>	<i>South side, commencing at 6 metres east of its intersection with Whitmore Street (Grid coordinates x= 1,748,834.9 m, y= 5,428,685.2 m), and extending in an easterly direction following the southern kerbline for 71 metres.</i>
<b>Murphy Street</b>	<i>Cycle lane, at all times</i>	<i>East side, commencing at its intersection with Tinakori Road (Grid coordinates x= 1,748,894.8 m, y= 5,429,559.0 m), and extending in a southerly direction following the eastern kerbline for 95 metres.</i>
<b>Murphy Street</b>	<i>Cycle lane, at all times</i>	<i>West side, commencing 178 meters south of its intersection with Tinakori Road (Grid coordinates x= 1,749,059.0 m, y= 5,429,124.6 m), and extending in a southerly direction following the western kerbline for 153 metres.</i>
<b>Mulgrave Street</b>	<i>Cycle lane, at all times</i>	<i>West side, commencing at its intersection with Pipitea Street (Grid coordinates x= 1,748,894.8 m, y= 5,429,559.0 m), and extending in a southerly direction following the western kerbline for 271 metres.</i>
<b>Bunny Street</b>	<i>Shared path</i>	<i>East side, commencing at its intersection with Thorndon Quay (Grid Coordinates X= 1,748,995.0 m, Y= 5,428,691.5 m) and extending in an easterly direction following the footpath for 8 meters.</i>
<b>Aitken Street</b>	<i>Shared path</i>	<i>South Side commencing at its intersection with Molesworth Street (Grid Coordinates X= 1,748,892.772 m, Y= 5,428,966.59 m) and extending in a southerly direction following the footpath for 10 metres.</i>

## Items to delete:

Delete from Schedule A (Time Limited) of the Traffic Restrictions Schedule

# We are proposing a change in your area

Column One	Column Two	Column Three
<b>Tinakori Road</b>	<i>P120 Except for Authorised Vehicles, Monday to Saturday, 6:00pm - 9:00pm, Sunday, 8:00am - 9:00pm</i>	<i>East side, commencing 178.5 metres south of its intersection with Hill Street, (Grid Coordinates <math>x= 1748372.0</math> m <math>y= 5428996.0</math> m) and extending in a southerly direction following the eastern kerbline for 9 metres.</i>
<b>Aitken Street</b>	<i>P10, Monday to Saturday 8:00am - 6:00pm</i>	<i>South side, commencing 16.5 metres west of its intersection with Mulgrave Street (Grid Coordinates <math>X=2659081.642092</math> m, <math>Y=5990668.297371</math> m) and extending in a westerly direction following the kerbline for 10 metres. (2 parallel carparks)</i>
<b>Aitken Street</b>	<i>P10, Monday to Saturday 8:00am - 6:00pm</i>	<i>South side, commencing 38.5 metres west of its intersection with Mulgrave Street (Grid Coordinates <math>X=2659081.642092</math> m, <math>Y=5990668.297371</math> m) and extending in a westerly direction following the kerbline for 12.5 metres. (4 angle carparks)</i>
<b>Tinakori Road</b>	<i>P60, Monday – Saturday 8:00am-6:00pm</i>	<i>West side, commencing 31 metres north of its intersection with Lewisville Terrace (Grid Coordinates <math>x= 1748176.1</math> m, <math>y= 5428795.7</math> m), and extending in a northerly direction following the western kerbline for 100 metres.</i>
<b>Tinakori Road</b>	<i>P120, Except for Authorised Vehicles, Monday to Saturday, 6:00pm - 9:00pm, Sunday, 8:00am - 9:00pm</i>	<i>West side, commencing 93.5 metres north of its intersection with Upton Terrace and extending in a northerly direction following the western kerbline for 13 metres</i>

## Delete from Schedule B (Class restricted) of the Traffic Restrictions Schedule

Column One	Column Two	Column Three
<b>Hill Street</b>	<i>Bus Stop, Monday to Friday, 8:00am - 4:00pm</i>	<i>South side, commencing 192 metres west of its intersection with Molesworth Street (Grid coordinates <math>x= 1748879.3</math> m, <math>y= 5428968.6</math> m), and extending in a westerly direction following the southern kerbline for 34 metres.</i>

# We are proposing a change in your area

<b>Aitken Street</b>	<i>Tour bus stop, Monday to Sunday 9:00am - 6:00pm</i>	<i>North side, commencing 14 metres east of its intersection with Molesworth Street (Grid coordinates x= 1748891.7 m, y= 5428977.1 m), and extending in an easterly direction following the kerbline for 12 metres.</i>
<b>Aitken Street</b>	<i>Vehicles displaying an Operation Mobility Permit only, metered parking, P120 maximum, Monday to Thursday 8:00am - 6:00pm, Friday 8:00am - 8:00pm, Saturday and Sunday 8:00am - 6:00pm</i>	<i>South side, commencing 87 metres west of its intersection with Mulgrave Street (Grid coordinates x= 1,749,060.05 m, y= 5,428,956.16 m) and extending in a westerly direction following the kerbline for 6 metres (1 angle park).</i>
<b>Aitken Street</b>	<i>Motorcycle Parking, At All Times</i>	<i>North side, commencing 69 metres east of its intersection with Molesworth Street (Grid Coordinates X=2658913.372992 m, Y=5990689.297532 m) and extending in an easterly direction following the kerbline for 17.5 metres.</i>
<b>Molesworth Street</b>	<i>Bus Stop, At all times</i>	<i>West side, following the kerbline 113.5 metres north of its intersection with SH1 (Grid Coordinates X=2658926.808965 m, Y=5991048.671395 m) and extending in a northerly direction for 16.5 metres.</i>
<b>Molesworth Street</b>	<i>Bus Stop, At all times</i>	<i>West side, commencing 86 metres north of its intersection with Hill Street (Grid Coordinates X=2658905.789104 m, Y=5990690.019631 m) and extending in a northerly direction following the kerbline for 33.5 metres.</i>
<b>Lambton Quay</b>	<i>Bus Stop, Monday to Friday 7:00am - 9:00am.</i>	<i>Southeast side, commencing 28 metres southwest of its intersection with Bunny Street (Grid Coordinates X=2658960.574322 m, Y=5990471.518501 m) and extending in a south-westerly direction following the kerbline for 71 metres.</i>
<b>Bunny Street</b>	<i>Bus Stop, At all times</i>	<i>Northeast side, commencing 64 metres northwest of its intersection with Featherston Street (Grid Coordinates X=2659016.939652 m, Y=5990403.341289 m) and extending in a north-westerly direction following the kerb line for 15.5 metres.</i>



# We are proposing a change in your area

<b>Bunny Street</b>	<i>P10, Monday to Saturday 8:00am - 6:00pm, Goods Vehicles And Authorised Vehicles Only</i>	<i>Southwest side, commencing 54 metres northwest of its intersection with Stout Street (Grid Coordinates X=2659012.191081 m, Y=5990398.008715 m) and extending in a north-westerly direction following the kerbline for 6.5 metres.</i>
---------------------	---	--

## Delete from Schedule C (Direction) of the Traffic Restrictions Schedule

Column One	Column Two	Column Three
<b>Kate Shepard Place</b>	<i>One way restriction</i>	<i>East end, commencing 140 metres east of its intersection with Molesworth Street and extending in an easterly direction to its intersection with Mulgrave Street for 29 metres.</i>

## Delete from Schedule D (No Stopping) of the Traffic Restrictions Schedule

Column One	Column Two	Column Three
<b>Hill Street</b>	<i>No Stopping, At All Times</i>	<i>South side, commencing 322.5 metres west of its intersection with Molesworth Street (Grid coordinates x= 1748879.3 m, y= 5428968.6 m), and extending in a westerly direction following the southern kerbline for 13.5 metres.</i>
<b>Pipitea Street</b>	<i>No Stopping, At All Times</i>	<i>South side, commencing 148 metres west of its intersection with Murphy Street (Grid Coordinates X=2659080.236352 m, Y=5990835.772603 m) and extending in a westerly direction following the kerbline to its intersection with Molesworth Street for 12 metres.</i>
<b>Pipitea Street</b>	<i>No Stopping, At All Times</i>	<i>North side, commencing from its intersection with Molesworth Street (Grid Coordinates X=2658923.708789 m, Y=5990853.835219 m) and extending in an easterly direction following the kerbline for 13.5.</i>

## Delete from Schedule E (Residents Parking) of the Traffic Restrictions Schedule

Column One	Column Two	Column Three
------------	------------	--------------

# We are proposing a change in your area

<b>Hill Street</b>	<i>Resident Parking, Monday to Friday 8:00am - 6:00pm.</i>	<i>South side, commencing 336 metres west of its intersection with Molesworth Street (Grid coordinates x= 1748879.3 m, y= 5428968.6 m), and extending in a westerly direction following the southern kerbline for 5 metres.</i>
--------------------	--	---

## Delete from Schedule F (Metered Parking) of the Traffic Restrictions Schedule

<b>Column One</b>	<b>Column Two</b>	<b>Column Three</b>
<b>Aitken Street</b>	<i>P120 Maximum, Monday to Thursday 8:00am - 6:00pm, Friday 8:00am - 8:00pm, Saturday and Sunday 8:00am - 6:00pm</i>	<i>South side, commencing 51 metres west of its intersection with Mulgrave Street (Grid coordinates, x= 1,749,060.05 m, y= 5,428,956.16 m) and extending in a westerly direction following the kerbline for 36 metres (12 angle parking spaces).</i>
<b>Aitken Street</b>	<i>P120 Maximum, Monday to Thursday 8:00am - 6:00pm, Friday 8:00am - 8:00pm, Saturday 8:00am - 6:00pm</i>	<i>South side, commencing 106 metres west of its intersection with Mulgrave Street (Grid Coordinates X=2659081.642092 m, Y=5990668.297371 m) and extending in a westerly direction following the kerbline for 48 metres. (16 angle carparks)</i>
<b>Aitken Street</b>	<i>P120 Maximum, Monday to Thursday 8:00am - 6:00pm, Friday 8:00am - 8:00pm, Saturday 8:00am - 6:00pm</i>	<i>North side, commencing 26 metres east of its intersection with Molesworth Street (Grid coordinates x= 1748891.7 m, y= 5428977.1 m), and extending in an easterly direction following the kerbline for 43 metres.</i>
<b>Pipitea Street</b>	<i>P120 Maximum, Monday to Sunday 8:00am - 8:00pm</i>	<i>South side, commencing 108.5 metres west of its intersection with Murphy Street (Grid Coordinates X=2659080.236352 m, Y=5990835.772603 m) and extending in a westerly direction following the southern kerbline for 34.5 metres. (6 parallel carparks)</i>
<b>Pipitea Street</b>	<i>P120 Maximum, Monday to Thursday 8:00am - 6:00pm, Friday 8:00am - 8:00pm, Saturday 8:00am - 6:00pm</i>	<i>North side, commencing 13.5 metres east of its intersection with Molesworth Street (Grid Coordinates X=2658923.708789 m, Y=5990853.835219 m) and extending in an easterly direction following the kerbline for 23.5 metres. (4 parallel carparks)</i>

# We are proposing a change in your area

<b>Pipitea Street</b>	<i>P120 Maximum, Monday to Thursday 8:00am - 6:00pm, Friday 8:00am - 8:00pm, Saturday 8:00am - 6:00pm</i>	<i>North side, commencing 81 metres east of its intersection with Molesworth Street (Grid Coordinates X=2658923.708789 m, Y=5990853.835219 m) and extending in an easterly direction following the kerbline for 8 metres. (1 parallel carpark)</i>
<b>Pipitea Street</b>	<i>P120 Maximum, Monday to Thursday 8:00am - 6:00pm, Friday 8:00am - 8:00pm, Saturday 8:00am - 6:00pm</i>	<i>South side, commencing 54 metres west of its intersection with Murphy Street (Grid Coordinates X=2659080.236352 m, Y=5990835.772603 m) and extending in a westerly direction following the kerbline for 6 metres. (1 parallel carpark)</i>
<b>Molesworth Street</b>	<i>P120 Maximum, Monday to Thursday 8:00am - 6:00pm, Friday 8:00am - 8:00pm, Saturday 8:00am - 6:00pm</i>	<i>East side, commencing 82.5 metres south of its intersection with Kate Sheppard Place (Grid Coordinates X=2658911.120144 m, Y=5990592.657958 m) and extending in a southerly direction following the kerbline for 14 metres. (2 parallel carparks)</i>
<b>Molesworth Street</b>	<i>P120 Maximum, Monday to Thursday 8:00am - 6:00pm, Friday 8:00am - 8:00pm, Saturday 8:00am - 6:00pm</i>	<i>East side, commencing 14.5 metres south of its intersection with Kate Sheppard Place (Grid Coordinates X=2658911.120144 m, Y=5990592.657958 m) and extending in a southerly direction following the kerbline for 54.5 metres. (9 parallel carparks)</i>
<b>Molesworth Street</b>	<i>P120 Maximum, Monday to Thursday 8:00am - 6:00pm, Friday 8:00am - 8:00pm, Saturday 8:00am - 6:00pm</i>	<i>East side, commencing 12.5 metres north of its intersection with Kate Sheppard Place (Grid Coordinates X=2658910.800465 m, Y=5990601.578477 m) and extending in a northerly direction following the kerbline for 50 metres. (8 parallel carparks)</i>
<b>Molesworth Street</b>	<i>P120 Maximum, Monday to Thursday 8:00am - 6:00pm, Friday 8:00am - 8:00pm, Saturday 8:00am - 6:00pm</i>	<i>East side, commencing 18 metres north of its intersection with Aitken Street (Grid Coordinates X=2658913.372992 m, Y=5990689.297532 m) and extending in a northerly direction following the kerbline for 58.5 metres. (10 parallel carparks)</i>
<b>Molesworth Street</b>	<i>At All Times, P120 Maximum, Monday to Thursday 8:00am - 6:00pm, Friday 8:00am - 8:00pm, Saturday and Sunday 8:00am - 6:00pm, Displaying an Operation Mobility Permit Only</i>	<i>East side, commencing 70.5 metres north of its intersection with Aitken Street (Grid coordinates x= 1748891.7 m, y= 5428977.1 m). and extending in a northerly direction following the kerbline for 8.5 metres.</i>

# We are proposing a change in your area

<b>Molesworth Street</b>	<i>P120 Maximum, Monday to Thursday 8:00am - 6:00pm, Friday 8:00am - 8:00pm, Saturday 8:00am - 6:00pm</i>	<i>East side, commencing 79 metres north of its intersection with Aitken Street (Grid Coordinates X=2658913.372992 m, Y=5990689.297532 m) and extending in a northerly direction following the kerbline for 64.5 metres. (11 parallel carparks)</i>
<b>Molesworth Street</b>	<i>P120 Maximum, Monday to Thursday 8:00am - 6:00pm, Friday 8:00am - 8:00pm, Saturday 8:00am - 6:00pm</i>	<i>East side, commencing 10 metres north of its intersection with Pipitea Street (Grid Coordinates X=2658923.708789 m, Y=5990853.835219 m) and extending in a northerly direction following the kerbline for 33.5 metres. (6 parallel carparks)</i>
<b>Molesworth Street</b>	<i>P120 Maximum, Monday to Thursday 8:00am - 6:00pm, Friday 8:00am - 8:00pm, Saturday 8:00am - 6:00pm</i>	<i>East side, commencing 110 metres north of its intersection with Pipitea Street (Grid Coordinates X=2658923.708789 m, Y=5990853.835219 m) and extending in a northerly direction following the kerbline for 29.5 metres. (5 parallel carparks)</i>
<b>Molesworth Street</b>	<i>P120 Maximum, Monday to Thursday 8:00am - 6:00pm, Friday 8:00am - 8:00pm, Saturday 8:00am - 6:00pm</i>	<i>East side, commencing 150.5 metres north of its intersection with Pipitea Street (Grid Coordinates X=2658923.708789 m, Y=5990853.835219 m) and extending in a northerly direction following the kerbline for 36 metres. (6 parallel carparks)</i>
<b>Molesworth Street</b>	<i>P120 Maximum, Monday to Thursday 8:00am - 6:00pm, Friday 8:00am - 8:00pm, Saturday 8:00am - 6:00pm</i>	<i>East side, commencing 6.5 metres north of its intersection with May Street (Grid Coordinates X=2658934.887738 m, Y=5991054.700109 m) and extending in a northerly direction following the kerbline for 33.5 metres.</i>
<b>Molesworth Street</b>	<i>P120 Maximum, Monday to Thursday 8:00am - 6:00pm, Friday 8:00am - 8:00pm, Saturday 8:00am - 6:00pm</i>	<i>East side, commencing 73.5 metres north of its intersection with May Street (Grid Coordinates X=2658934.887738 m, Y=5991054.700109 m) and extending in a northerly direction following the kerbline for 11 metres. (2 parallel carparks)</i>
<b>Molesworth Street</b>	<i>P120 Maximum, Monday to Thursday 8:00am - 6:00pm, Friday 8:00am - 8:00pm, Saturday 8:00am - 6:00pm</i>	<i>West side, following the kerbline 40 metres north of its intersection with SH1 (Grid Coordinates X=2658926.808965 m, Y=5991048.671395 m) and extending in a northerly direction for 21 metres. (4 parallel carparks)</i>
<b>Molesworth Street</b>	<i>P120 Maximum, Monday to Thursday 8:00am - 6:00pm, Friday 8:00am - 8:00pm, Saturday and Sunday 8:00 - 6:00pm</i>	<i>West side, commencing 13 metres north of its intersection with Hawkestone Street (Grid Coordinates X=2658917.001976 m, Y=5990906.929244 m) and extending in a northerly direction following the kerbline for 10 metres. (2 parallel carparks)</i>

# We are proposing a change in your area

<b>Molesworth Street</b>	<i>P120 Maximum, Monday to Thursday 8:00am - 6:00pm, Friday 8:00am - 8:00pm, Saturday and Sunday 8:00 - 6:00pm</i>	<i>West side, following the kerbline 39.5 metres north of its intersection with Lambton Quay (Grid Coordinates X=2658945.861378 m, Y=5990486.755069 m) and extending in a northerly direction for 91.5 metres. (23 angle and 1 parallel carparks)</i>
<b>Lambton Quay</b>	<i>P120 Maximum, Monday to Thursday 9:00am - 6:00pm, Friday 9:00am - 8:00pm, Saturday and Sunday 8:00am - 6:00pm</i>	<i>Southeast side, commencing 28 metres southwest of its intersection with Bunny Street (Grid coordinates x= 1748938.9 m, y= 5428759.3 m), and extending in a south-westerly direction following the kerbline for 71 metres. (12 parallel carparks)</i>
<b>Murphy Street</b>	<i>P120 Maximum, Monday to Thursday 9:00am - 6:00pm, Friday 9:00am - 8:00pm, Saturday and Sunday 8:00am - 6:00pm</i>	<i>East side, commencing 4.5 metres south of its intersection with Halswell Street (Grid Coordinates X=2658992.279578 m, Y=5991067.249367 m) and extending in a southerly direction following the kerbline for 56.5 metres. (10 parallel carparks)</i>
<b>Murphy Street</b>	<i>P120 Maximum, Monday to Thursday 9:00am - 6:00pm, Friday 9:00am - 8:00pm, Saturday and Sunday 8:00am - 6:00pm</i>	<i>East side, commencing 6 metres south of its intersection with Turnbull Street (Grid Coordinates X=2659023.198672 m, Y=5990993.606174 m) and extending in a southerly direction following the kerbline for 17.5 metres. (3 parallel carparks)</i>
<b>Mulgrave Street</b>	<i>P120 Maximum, Monday to Thursday 9:00am - 6:00pm, Friday 9:00am - 8:00pm, Saturday and Sunday 8:00am - 6:00pm</i>	<i>West side, commencing 32.5 metres south of its intersection with Pipitea Street (Grid Coordinates X=2659080.236352 m, Y=5990835.772603 m) and extending in a southerly direction following the kerbline for 41 metres. (7 parallel carparks)</i>
<b>Stout Street</b>	<i>P120 Maximum, Monday to Thursday 9:00am - 6:00pm, Friday 9:00am - 8:00pm, Saturday and Sunday 8:00am - 6:00pm</i>	<i>Northwest side, following the kerbline 12 metres northeast of its intersection with Whitmore Street (Grid coordinates x= 1748887.8 m, y= 5428591.3 m), and extending in a north-easterly direction for 72.5 metres. (21 angle carparks)</i>
<b>Mulgrave Street</b>	<i>P120 Maximum, Monday to Thursday 9:00am - 6:00pm, Friday 9:00am - 8:00pm, Saturday 8:00am - 6:00pm</i>	<i>East side, commencing 32 metres south of its intersection with Pipitea Street (Grid Coordinates X=2659095.414311 m, Y=5990834.717116 m) and extending in a southerly direction following the kerbline for 10.5 metres. (2 parallel carparks)</i>

# We are proposing a change in your area

<b>Mulgrave Street</b>	<i>P120 Maximum, Monday to Thursday 9:00am - 6:00pm, Friday 9:00am - 8:00pm, Saturday 8:00am - 6:00pm</i>	<i>East side, commencing 105.5 metres south of its intersection with Pipitea Street (Grid Coordinates X=2659095.414311 m, Y=5990834.717116 m) and extending in a southerly direction following the kerbline for 38.5 metres. (6 parallel carparks)</i>
------------------------	---	--

Delete from Schedule G (Give Way) of the Traffic Restrictions Schedule

Column One	Column Two	Column Three
<b>May Street</b>	<i>Give Way</i>	<i>East bound traffic, at its intersection with Murphy Street.</i>
<b>Kate Shepard Place</b>	<i>Give Way</i>	<i>West bound traffic, at its intersection with Molesworth Street.</i>

Delete from Schedule H (Pedestrian Crossing) of the Traffic Restrictions Schedule

Column One	Column Two	Column Three
<b>Molesworth Street</b>	<i>Pedestrian Crossing</i>	<i>West side, following the kerbline 98 metres north of its intersection with SH1 (Grid Coordinates X=2658926.808965 m, Y=5991048.671395 m).</i>

**Prepared By:** Renee Corlett

**(Project lead – Transitional programme)**

**Approved By:** Brad Singh

**Date:** 22/02/2023